



[Go to Product page](#)

Datasheet for ABIN1804166  
**anti-YPEL4 antibody (N-Term)**

1 Image

### Overview

Quantity:	0.05 mg
Target:	YPEL4
Binding Specificity:	N-Term
Reactivity:	Human
Host:	Rabbit
Clonality:	Polyclonal
Conjugate:	This YPEL4 antibody is un-conjugated
Application:	Western Blotting (WB), Immunohistochemistry (Paraffin-embedded Sections) (IHC (p)), Immunohistochemistry (IHC)

### Product Details

Brand:	IHC-plus™
Isotype:	IgG
Purification:	Immunoaffinity purified

### Target Details

Target:	YPEL4
Alternative Name:	YPEL4 ( <a href="#">YPEL4 Products</a> )
Background:	Name/Gene ID: YPEL4

Synonyms: YPEL4, Protein yippee-like 4, Yippee-like 4 (Drosophila)

## Target Details

---

Gene ID: 219539

UniProt: [Q96NS1](#)

## Application Details

---

Application Notes: Approved: IHC, IHC-P (5 µg/mL), WB (1 - 2 µg/mL)

Usage: YPEL4 antibody can be used for detection of YPEL4 by Western blot at 1-2 µg/mL.

Comment: Target Species of Antibody: Human

Restrictions: For Research Use only

## Handling

---

Format: Liquid

Concentration: Lot specific

Buffer: PBS, 0.02 % sodium azide

Preservative: Sodium azide

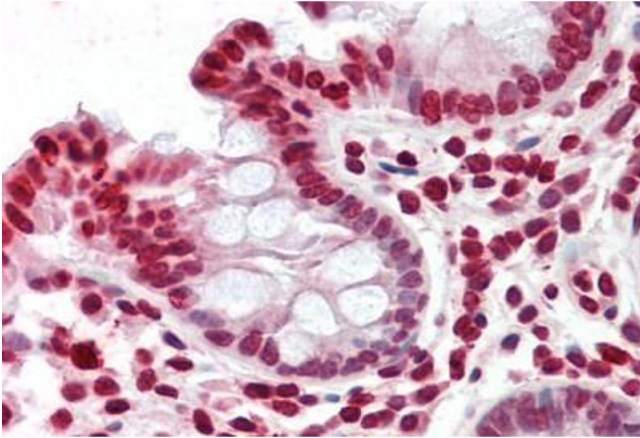
Precaution of Use: This product contains Sodium azide: a POISONOUS AND HAZARDOUS SUBSTANCE which should be handled by trained staff only.

Handling Advice: Avoid repeated freezing and thawing.

Storage: 4 °C, -20 °C

Storage Comment: Store at 4°C for 3 months and -20°C, stable for up to 1 year. Avoid repeated freeze-thaw cycles.

Expiry Date: 12 months



### Immunohistochemistry

**Image 1.** Human Colon: Formalin-Fixed, Paraffin-Embedded (FFPE)