

Datasheet for ABIN1804195
anti-ZFYVE21 antibody (N-Term)[Go to Product page](#)

2 Images

Overview

Quantity:	50 µg
Target:	ZFYVE21
Binding Specificity:	N-Term
Reactivity:	Human
Host:	Rabbit
Clonality:	Polyclonal
Conjugate:	This ZFYVE21 antibody is un-conjugated
Application:	Western Blotting (WB), Immunohistochemistry (Paraffin-embedded Sections) (IHC (p)), Immunohistochemistry (IHC)

Product Details

Brand:	IHC-plus™
Isotype:	IgG
Specificity:	At least two isoforms of ZF21 are known to exist, this antibody will detect both isoforms.
Purification:	Immunoaffinity purified

Target Details

Target:	ZFYVE21
Alternative Name:	ZFYVE21 (ZFYVE21 Products)
Background:	Name/Gene ID: ZFYVE21

Target Details

Synonyms: ZFYVE21, ZF21, FYVE domain containing 21

Gene ID: 79038

UniProt: [Q9BQ24](#)

Application Details

Application Notes: Approved: IHC, IHC-P (5 µg/mL), WB (1 - 2 µg/mL)

Usage: ZF21 antibody can be used for detection of ZF21 by Western blot at 1-2 µg/mL.

Comment: Target Species of Antibody: Human

Restrictions: For Research Use only

Handling

Format: Liquid

Concentration: Lot specific

Buffer: PBS, 0.02 % sodium azide

Preservative: Sodium azide

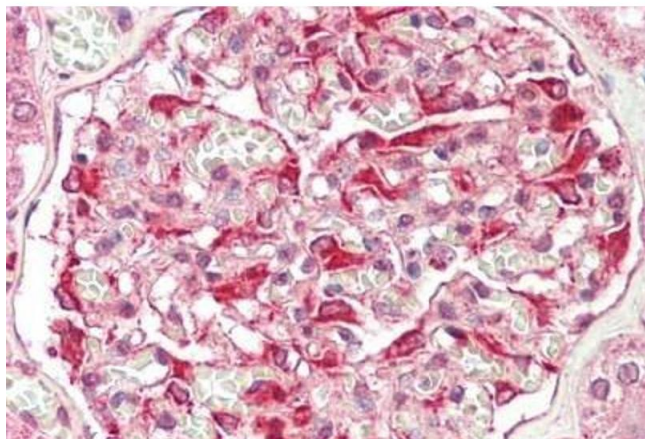
Precaution of Use: This product contains Sodium azide: a POISONOUS AND HAZARDOUS SUBSTANCE which should be handled by trained staff only.

Handling Advice: Aliquot to avoid repeated freezing and thawing.

Storage: 4 °C,-20 °C

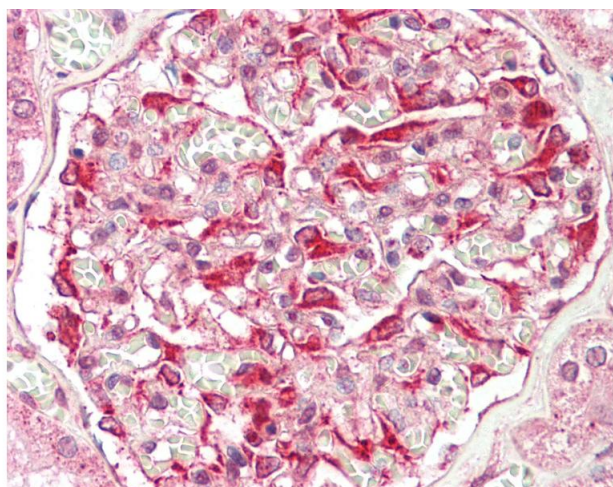
Storage Comment: Store at 4°C for 3 months and -20°C, stable for up to 1 year. Avoid repeated freeze-thaw cycles.

Expiry Date: 12 months



Immunohistochemistry

Image 1. Human Kidney: Formalin-Fixed, Paraffin-Embedded (FFPE)



Immunohistochemistry

Image 2. Anti-ZFYVE21 antibody IHC staining of human kidney. Immunohistochemistry of formalin-fixed, paraffin-embedded tissue after heat-induced antigen retrieval.