

Datasheet for ABIN1804201
anti-CRIM1 antibody (C-Term)[Go to Product page](#)

2 Images

Overview

Quantity:	50 µg
Target:	CRIM1
Binding Specificity:	C-Term
Reactivity:	Human
Host:	Rabbit
Clonality:	Polyclonal
Conjugate:	This CRIM1 antibody is un-conjugated
Application:	Western Blotting (WB), Immunohistochemistry (IHC), Immunohistochemistry (Paraffin-embedded Sections) (IHC (p))

Product Details

Brand:	IHC-plus™
Isotype:	IgG
Specificity:	CRIM1 antibody is human reactive. CRIM1 antibody is predicted to not cross-react with CRIM2.
Purification:	Immunoaffinity purified

Target Details

Target:	CRIM1
Alternative Name:	CRIM1 (CRIM1 Products)
Background:	Name/Gene ID: CRIM1

Target Details

Synonyms: CRIM1, CRIM-1, Cysteine-rich motor neuron 1, S52

Gene ID: 51232

UniProt: [Q9NZV1](#)

Pathways: [Growth Factor Binding](#)

Application Details

Application Notes: Approved: IHC, IHC-P (5 µg/mL), WB (1 - 2 µg/mL)

Usage: CRIM1 antibody can be used for detection of Crim1 by Western blot at 1-2 µg/mL.

Comment: Target Species of Antibody: Human

Restrictions: For Research Use only

Handling

Format: Liquid

Concentration: Lot specific

Buffer: PBS, 0.02 % sodium azide

Preservative: Sodium azide

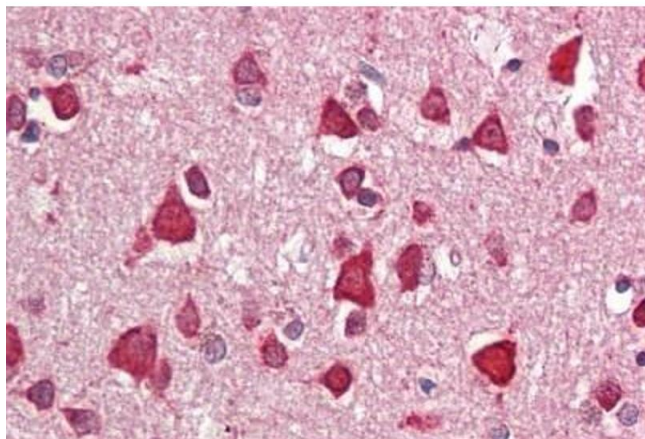
Precaution of Use: This product contains Sodium azide: a POISONOUS AND HAZARDOUS SUBSTANCE which should be handled by trained staff only.

Handling Advice: Aliquot to avoid repeated freezing and thawing.

Storage: 4 °C, -20 °C

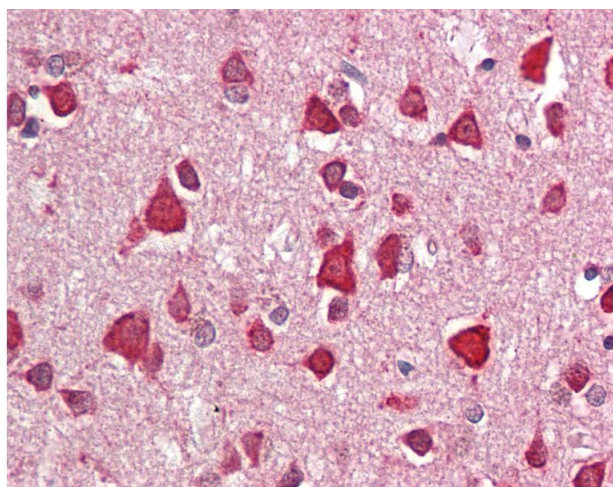
Storage Comment: Store at 4°C for 3 months and -20°C, stable for up to 1 year. Avoid repeated freeze-thaw cycles.

Expiry Date: 12 months



Immunohistochemistry

Image 1. Human Brain, Cortex: Formalin-Fixed, Paraffin-Embedded (FFPE)



Immunohistochemistry

Image 2. Anti-CRIM1 antibody IHC staining of human brain, cortex. Immunohistochemistry of formalin-fixed, paraffin-embedded tissue after heat-induced antigen retrieval.