

Datasheet for ABIN1804207
anti-RGS22 antibody (N-Term)[Go to Product page](#)

2 Images

Overview

Quantity:	0.05 mg
Target:	RGS22
Binding Specificity:	N-Term
Reactivity:	Human
Host:	Rabbit
Clonality:	Polyclonal
Conjugate:	This RGS22 antibody is un-conjugated
Application:	Western Blotting (WB), Immunohistochemistry (IHC), Immunohistochemistry (Paraffin-embedded Sections) (IHC (p))

Product Details

Brand:	IHC-plus™
Isotype:	IgG
Specificity:	At least four isoforms of RGS22 are known to exist, this antibody will detect the three longest isoforms. RGS22 antibody is predicted to not cross-react with other RGS proteins
Purification:	Immunoaffinity purified

Target Details

Target:	RGS22
Alternative Name:	RGS22 (RGS22 Products)

Target Details

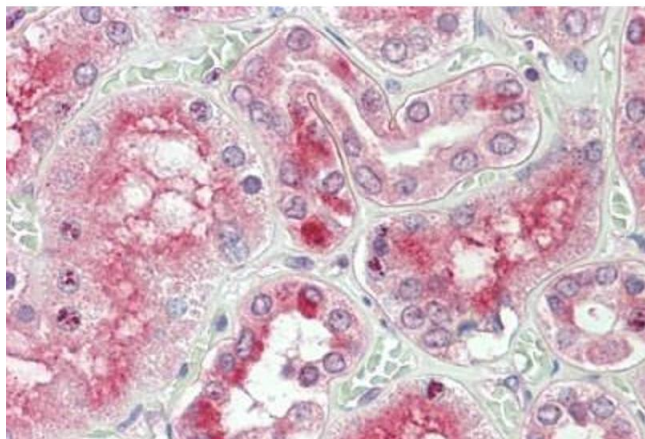
Background:	Name/Gene ID: RGS22 Family: Regulator of G-protein signalling Synonyms: RGS22, DKFZP434I092, PRTD-NY2
Gene ID:	26166
UniProt:	Q8NE09
Pathways:	Regulation of G-Protein Coupled Receptor Protein Signaling

Application Details

Application Notes:	Approved: IHC, IHC-P (5 µg/mL), WB (1 - 2 µg/mL) Usage: RGS22 antibody can be used for detection of RGS22 by Western blot at 1-2 µg/mL.
Comment:	Target Species of Antibody: Human
Restrictions:	For Research Use only

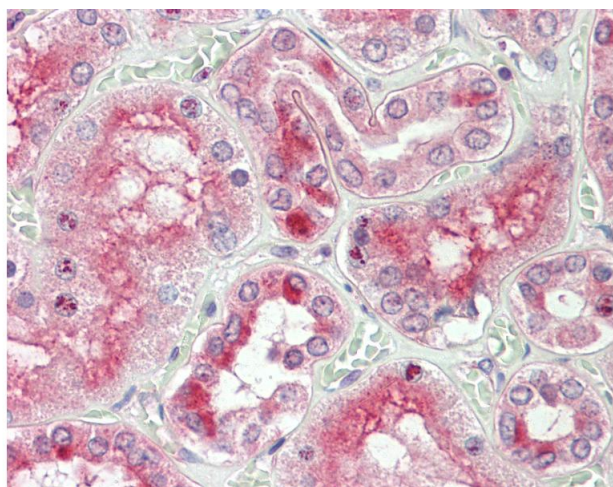
Handling

Format:	Liquid
Concentration:	Lot specific
Buffer:	PBS, 0.02 % sodium azide
Preservative:	Sodium azide
Precaution of Use:	This product contains Sodium azide: a POISONOUS AND HAZARDOUS SUBSTANCE which should be handled by trained staff only.
Handling Advice:	Avoid repeated freezing and thawing.
Storage:	4 °C, -20 °C
Storage Comment:	Store at 4°C for 3 months and -20°C, stable for up to 1 year. Avoid repeated freeze-thaw cycles.
Expiry Date:	12 months



Immunohistochemistry

Image 1. Human Kidney: Formalin-Fixed, Paraffin-Embedded (FFPE)



Immunohistochemistry

Image 2. Anti-RGS22 antibody IHC staining of human kidney. Immunohistochemistry of formalin-fixed, paraffin-embedded tissue after heat-induced antigen retrieval.