

Datasheet for ABIN1804218
anti-SGSM1 antibody (Internal Region)



[Go to Product page](#)

2 Images

Overview

Quantity:	0.05 mg
Target:	SGSM1
Binding Specificity:	Internal Region
Reactivity:	Human
Host:	Rabbit
Clonality:	Polyclonal
Conjugate:	This SGSM1 antibody is un-conjugated
Application:	Western Blotting (WB), Immunohistochemistry (IHC), Immunohistochemistry (Paraffin-embedded Sections) (IHC (p))

Product Details

Brand:	IHC-plus™
Isotype:	IgG
Specificity:	At least four isoforms of SGSM1 are known to exist, SGSM1 antibody will detect all four isoforms.
Purification:	Immunoaffinity purified

Target Details

Target:	SGSM1
Alternative Name:	SGSM1 (SGSM1 Products)

Target Details

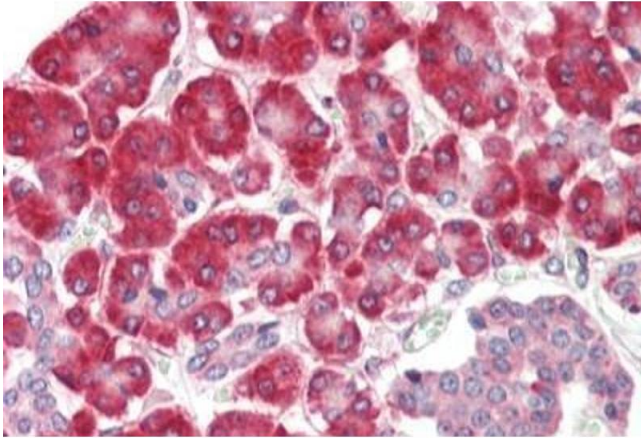
Background:	Name/Gene ID: SGSM1
	Synonyms: SGSM1, KIAA1941, RUTBC2
Gene ID:	129049
UniProt:	Q2NKQ1

Application Details

Application Notes:	Approved: IHC, IHC-P (5 µg/mL), WB (1 - 2 µg/mL)
	Usage: SGSM1 antibody can be used for detection of SGSM1 by Western blot at 1-2 µg/mL.
Comment:	Target Species of Antibody: Human
Restrictions:	For Research Use only

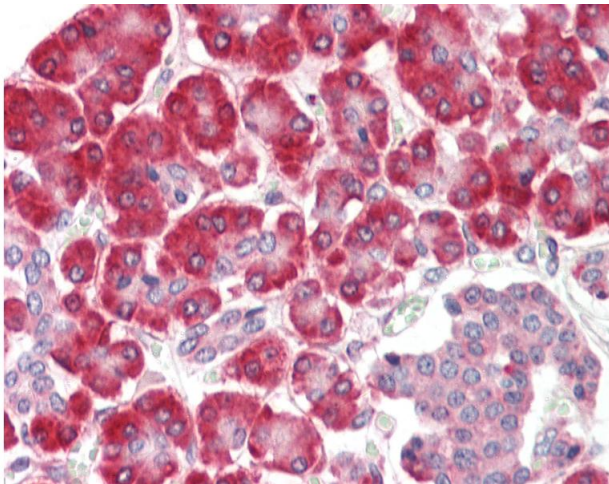
Handling

Format:	Liquid
Concentration:	Lot specific
Buffer:	PBS, 0.02 % sodium azide
Preservative:	Sodium azide
Precaution of Use:	This product contains Sodium azide: a POISONOUS AND HAZARDOUS SUBSTANCE which should be handled by trained staff only.
Handling Advice:	Avoid repeated freezing and thawing.
Storage:	4 °C, -20 °C
Storage Comment:	Store at 4°C for 3 months and -20°C, stable for up to 1 year. Avoid repeated freeze-thaw cycles.
Expiry Date:	12 months



Immunohistochemistry

Image 1. Human Pancreas: Formalin-Fixed, Paraffin-Embedded (FFPE)



Immunohistochemistry

Image 2. Anti-SGSM1 antibody IHC staining of human pancreas. Immunohistochemistry of formalin-fixed, paraffin-embedded tissue after heat-induced antigen retrieval.