



[Go to Product page](#)

Datasheet for ABIN1804223

anti-KEAP1 antibody (C-Term)

2 Images

Overview

Quantity:	0.05 mg
Target:	KEAP1
Binding Specificity:	C-Term
Reactivity:	Human
Host:	Rabbit
Clonality:	Polyclonal
Conjugate:	This KEAP1 antibody is un-conjugated
Application:	Western Blotting (WB), Immunohistochemistry (IHC), Immunohistochemistry (Paraffin-embedded Sections) (IHC (p))

Product Details

Brand:	IHC-plus™
Isotype:	IgG
Specificity:	At least two isoforms of KEAP1 are known to exist.
Purification:	Immunoaffinity purified

Target Details

Target:	KEAP1
Alternative Name:	KEAP1 (KEAP1 Products)
Background:	Name/Gene ID: KEAP1

Target Details

Synonyms: KEAP1, Cytosolic inhibitor of Nrf2, INrf2, KLHL19, Kelch-like protein 19, KIAA0132

Gene ID: 9817

UniProt: [Q14145](#)

Pathways: [Maintenance of Protein Location](#)

Application Details

Application Notes: Approved: IHC, IHC-P (2.5 µg/mL), WB (1 - 2 µg/mL)

Usage: KEAP1 antibody can be used for detection of KEAP1 by Western blot at 1-2 µg/mL.

Comment: Target Species of Antibody: Human

Restrictions: For Research Use only

Handling

Format: Liquid

Concentration: Lot specific

Buffer: PBS, 0.02 % sodium azide

Preservative: Sodium azide

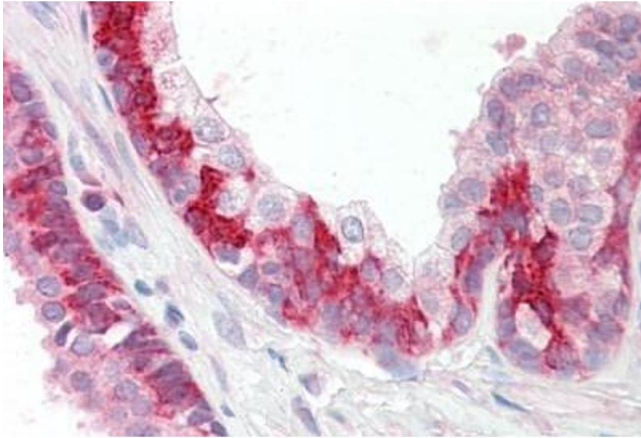
Precaution of Use: This product contains Sodium azide: a POISONOUS AND HAZARDOUS SUBSTANCE which should be handled by trained staff only.

Handling Advice: Avoid repeated freezing and thawing.

Storage: 4 °C, -20 °C

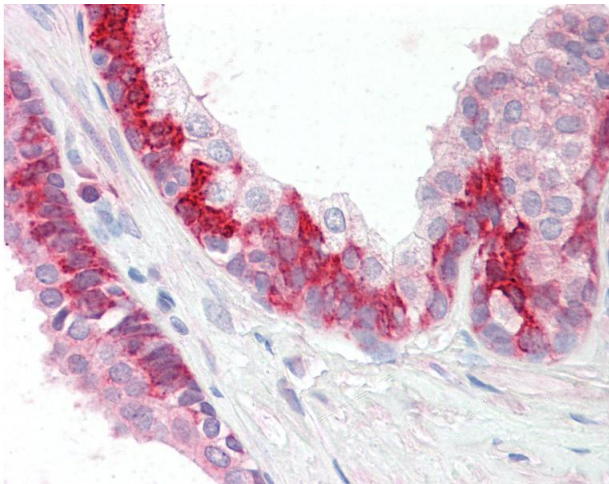
Storage Comment: Store at 4°C for 3 months and -20°C, stable for up to 1 year. Avoid repeated freeze-thaw cycles.

Expiry Date: 12 months



Immunohistochemistry

Image 1. Human Prostate: Formalin-Fixed, Paraffin-Embedded (FFPE)



Immunohistochemistry

Image 2. Anti-KEAP1 antibody IHC staining of human prostate. Immunohistochemistry of formalin-fixed, paraffin-embedded tissue after heat-induced antigen retrieval.