



[Go to Product page](#)

Datasheet for ABIN1804226
anti-GHDC antibody (N-Term)

2 Images

Overview

Quantity:	0.05 mg
Target:	GHDC
Binding Specificity:	N-Term
Reactivity:	Human
Host:	Rabbit
Clonality:	Polyclonal
Conjugate:	This GHDC antibody is un-conjugated
Application:	Western Blotting (WB), Immunohistochemistry (IHC), Immunohistochemistry (Paraffin-embedded Sections) (IHC (p))

Product Details

Brand:	IHC-plus™
Isotype:	IgG
Specificity:	Multiple isoforms are known to exist.
Purification:	Immunoaffinity purified

Target Details

Target:	GHDC
Alternative Name:	GHDC (GHDC Products)
Background:	Name/Gene ID: GHDC

Target Details

Synonyms: GHDC, D11LGP1E, D11LGP1, Homolog of mouse LGP1, LGP1, GH3 domain containing, GH3 domain-containing protein

Gene ID: 84514

UniProt: [Q8N2G8](#)

Application Details

Application Notes: Approved: IHC, IHC-P (5 µg/mL), WB (0.5 - 1 µg/mL)

Usage: GHDC antibody can be used for detection of GHDC by Western blot at 0.5-1 µg/mL.

Comment: Target Species of Antibody: Human

Restrictions: For Research Use only

Handling

Format: Liquid

Concentration: Lot specific

Buffer: PBS, 0.02 % sodium azide

Preservative: Sodium azide

Precaution of Use: This product contains Sodium azide: a POISONOUS AND HAZARDOUS SUBSTANCE which should be handled by trained staff only.

Handling Advice: Avoid repeated freezing and thawing.

Storage: 4 °C, -20 °C

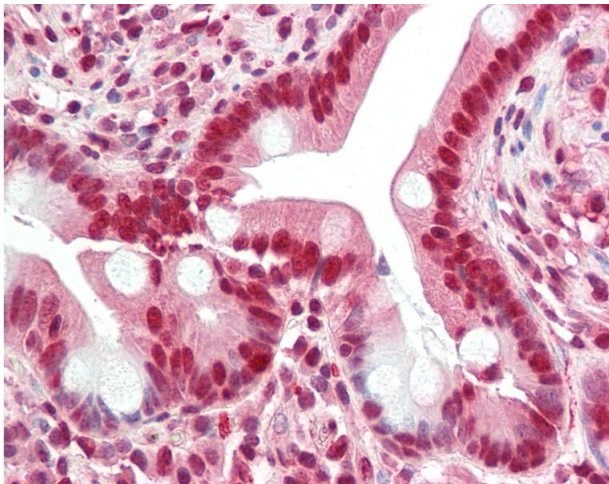
Storage Comment: Store at 4°C for 3 months and -20°C, stable for up to 1 year. Avoid repeated freeze-thaw cycles.

Expiry Date: 12 months



Immunohistochemistry

Image 1. Human Small Intestine: Formalin-Fixed, Paraffin-Embedded (FFPE)



Immunohistochemistry

Image 2. Anti-GHDC antibody IHC staining of human small intestine. Immunohistochemistry of formalin-fixed, paraffin-embedded tissue after heat-induced antigen retrieval.