



[Go to Product page](#)

Datasheet for ABIN1804264
anti-RXFP2 antibody (C-Term)

2 Images

Overview

Quantity:	50 µL
Target:	RXFP2
Binding Specificity:	C-Term
Reactivity:	Human, Monkey
Host:	Rabbit
Clonality:	Polyclonal
Conjugate:	This RXFP2 antibody is un-conjugated
Application:	ELISA, Immunohistochemistry (IHC), Immunohistochemistry (Paraffin-embedded Sections) (IHC (p))

Product Details

Brand:	IHC-plus™
Immunogen:	Synthetic peptide corresponding to a region within amino acids 690 and 754 of Relaxin Receptor 2 (SwissProt Q8WXD0). Percent identity by BLAST analysis: Human, Monkey (100%). Type of Immunogen: Synthetic peptide
Isotype:	IgG
Specificity:	Human RXFP2
Purification:	Immunoaffinity purified

Target Details

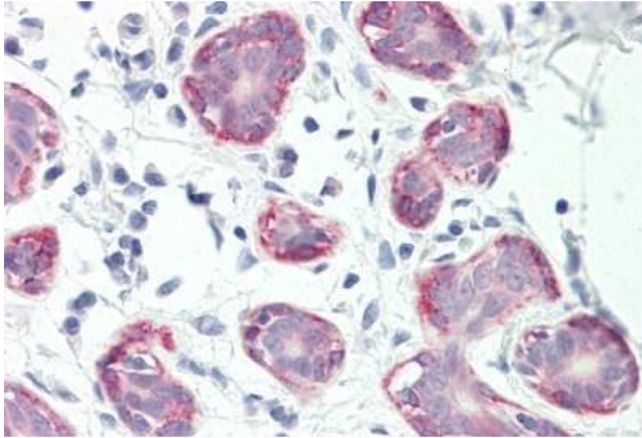
Target:	RXFP2
Alternative Name:	RXFP2 / LGR8 (RXFP2 Products)
Background:	Name/Gene ID: RXFP2 Subfamily: Relaxin Family: GPCR Synonyms: RXFP2, G-protein coupled receptor 106, GPR106, INSL3R, LGR8, GREAT, Relaxin receptor 2, LGR8.1, RXFP2
Gene ID:	122042
UniProt:	Q8WXD0
Pathways:	cAMP Metabolic Process , Myometrial Relaxation and Contraction

Application Details

Application Notes:	Approved: ELISA, IHC, IHC-P (10 µg/mL) Usage: Antibody reactive against peptide, detects immunogen.
Comment:	Target Species of Antibody: Human
Restrictions:	For Research Use only

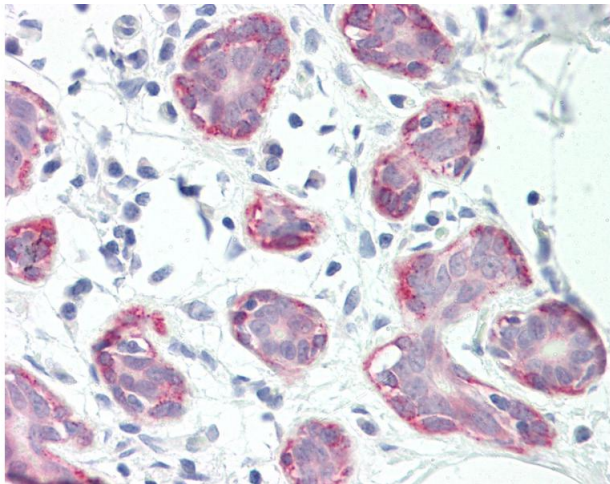
Handling

Format:	Liquid
Concentration:	Lot specific
Buffer:	0.1 M Tris-glycine, pH 7, 10 % Glycerol, 0.01 % Thimerosal
Preservative:	Thimerosal (Merthiolate)
Precaution of Use:	This product contains Thimerosal (Merthiolate): a POISONOUS AND HAZARDOUS SUBSTANCE which should be handled by trained staff only.
Handling Advice:	Avoid repeated freezing and thawing.
Storage:	-20 °C
Storage Comment:	Aliquot and freeze at -20°C. Avoid freeze-thaw cycles.



Immunohistochemistry

Image 1. Human Breast: Formalin-Fixed, Paraffin-Embedded (FFPE)



Immunohistochemistry

Image 2. Anti-RXFP2 / LGR8 antibody IHC staining of human breast. Immunohistochemistry of formalin-fixed, paraffin-embedded tissue after heat-induced antigen retrieval.