

## Datasheet for ABIN1804301 **anti-NANS antibody**

### 2 Images



[Go to Product page](#)

### Overview

Quantity:	50 µL
Target:	NANS
Reactivity:	Human
Host:	Mouse
Clonality:	Monoclonal
Conjugate:	This NANS antibody is un-conjugated
Application:	Western Blotting (WB), ELISA, Immunohistochemistry (IHC), Immunohistochemistry (Paraffin-embedded Sections) (IHC (p))

### Product Details

Brand:	IHC-plus™
Immunogen:	Recombinant human NANS (1-359aa) purified from E. coli. Type of Immunogen: Recombinant protein
Clone:	AT1G6
Isotype:	IgG1 kappa
Specificity:	Human NANS
Purification:	Protein G purified

### Target Details

Target:	NANS
---------	------

## Target Details

---

Alternative Name: NANS ([NANS Products](#))

---

Background: Name/Gene ID: NANS

Synonyms: NANS, SAS, Sialic acid phosphate synthase, Sialic acid synthase, N-acetylneuraminase synthase

---

Gene ID: 54187

---

UniProt: [Q9NR45](#)

---

## Application Details

---

Application Notes: Approved: ELISA, IHC, IHC-P (10 µg/mL), WB (1:1000)

---

Comment: Target Species of Antibody: Human

---

Restrictions: For Research Use only

---

## Handling

---

Format: Liquid

---

Concentration: Lot specific

---

Buffer: PBS, pH 7.4, 0.1 % sodium azide

---

Preservative: Sodium azide

---

Precaution of Use: This product contains Sodium azide: a POISONOUS AND HAZARDOUS SUBSTANCE which should be handled by trained staff only.

---

Handling Advice: Avoid repeated freezing and thawing.

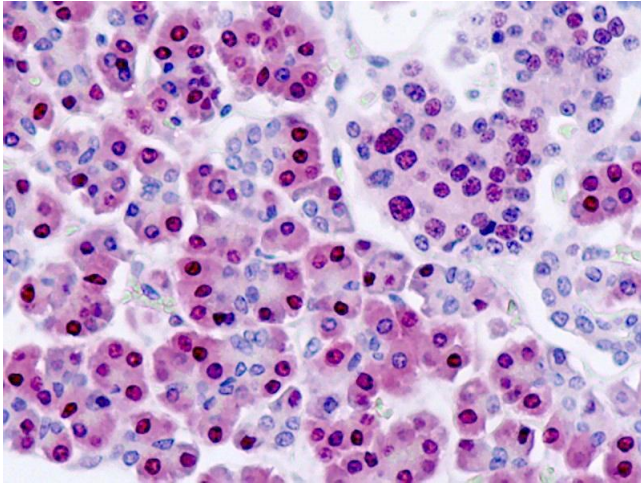
---

Storage: 4 °C, -20 °C

---

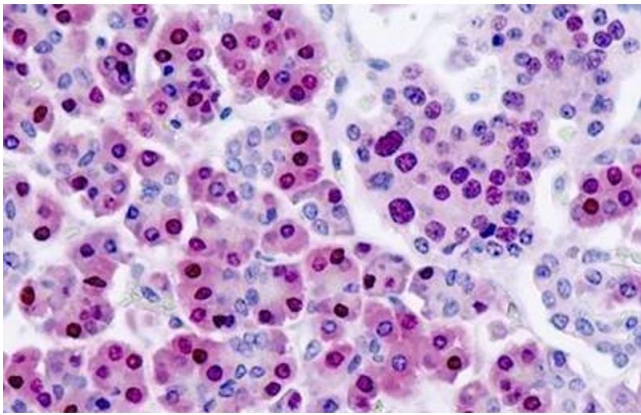
Storage Comment: Can be stored at 4°C. For long term storage, aliquot and store at -20°C. Avoid freeze-thaw cycles.

---



#### Immunohistochemistry

**Image 1.** Anti-NANS antibody IHC staining of human pancreas. Immunohistochemistry of formalin-fixed, paraffin-embedded tissue after heat-induced antigen retrieval.



#### Immunohistochemistry

**Image 2.** Human Pancreas: Formalin-Fixed, Paraffin-Embedded (FFPE)