

Datasheet for ABIN1804326

anti-ALDH6A1 antibody (AA 30-59)



[Go to Product page](#)

1 Image

Overview

Quantity:	200 µL
Target:	ALDH6A1
Binding Specificity:	AA 30-59
Reactivity:	Human
Host:	Rabbit
Clonality:	Polyclonal
Conjugate:	This ALDH6A1 antibody is un-conjugated
Application:	Western Blotting (WB), Immunohistochemistry (IHC), Flow Cytometry (FACS), Immunohistochemistry (Paraffin-embedded Sections) (IHC (p))

Product Details

Brand:	IHC-plus™
Specificity:	This ALDH6A1 antibody is generated from rabbits immunized with a KLH conjugated synthetic peptide between 30-59 amino acids from the N-terminal region of human ALDH6A1.
Purification:	Protein A purified

Target Details

Target:	ALDH6A1
Alternative Name:	ALDH6A1 (ALDH6A1 Products)
Background:	Name/Gene ID: ALDH6A1

Target Details

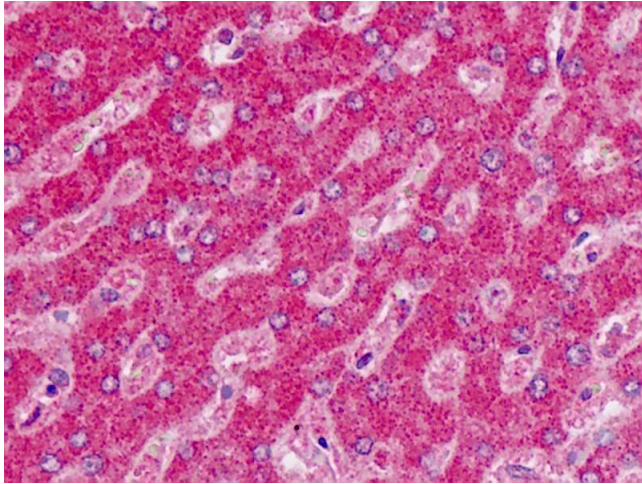
	Synonyms: ALDH6A1, MMSDH, MMSADHA
Gene ID:	4329
UniProt:	Q02252
Pathways:	Brown Fat Cell Differentiation

Application Details

Application Notes:	Approved: Flo (1:10 - 1:50), IHC, IHC-P (10 µg/mL), WB (1:1000)
Comment:	Target Species of Antibody: Human
Restrictions:	For Research Use only

Handling

Format:	Liquid
Concentration:	Lot specific
Buffer:	PBS with 0.09 % (w/v) sodium azide
Preservative:	Sodium azide
Precaution of Use:	This product contains Sodium azide: a POISONOUS AND HAZARDOUS SUBSTANCE which should be handled by trained staff only.
Storage:	4 °C,-20 °C
Storage Comment:	Maintain refrigerated at 2-8°C for up to 6 months. For long term storage store at -20°C.
Expiry Date:	6 months



Immunohistochemistry (Paraffin-embedded Sections)

Image 1. Human Liver: Formalin-Fixed, Paraffin-Embedded (FFPE)