



Datasheet for ABIN1804348  
**anti-UBE2D1 antibody (AA 1-95)**



[Go to Product page](#)

2 Images

Overview

Quantity:	50 µg
Target:	UBE2D1
Binding Specificity:	AA 1-95
Reactivity:	Human
Host:	Mouse
Clonality:	Monoclonal
Conjugate:	This UBE2D1 antibody is un-conjugated
Application:	Western Blotting (WB), Immunohistochemistry (IHC), ELISA, Immunohistochemistry (Paraffin-embedded Sections) (IHC (p))

Product Details

Brand:	IHC-plus™
Immunogen:	UBE2D1 (NP_003329, 1 a.a. ~ 95 a.a) partial recombinant protein with GST tag. MW of the GST tag alone is 26 KDa.  Type of Immunogen: Recombinant protein
Clone:	2C6
Isotype:	IgG2a kappa
Specificity:	Human UBE2D1
Purification:	Purified from ascites by Protein A

## Target Details

---

Target:	UBE2D1
Alternative Name:	UBE2D1 / UBCH5 ( <a href="#">UBE2D1 Products</a> )
Background:	Name/Gene ID: UBE2D1  Synonyms: UBE2D1, SFT, Ubiquitin-protein ligase D1, UBC4/5 homolog, UBCH5, UBCH5A, UBC4/5, UBC5A, Ubiquitin carrier protein D1, E2(17)KB1, Stimulator of Fe transport
Gene ID:	7321
NCBI Accession:	<a href="#">NP_003329</a>
UniProt:	<a href="#">P51668</a>
Pathways:	<a href="#">Activation of Innate immune Response</a> , <a href="#">Toll-Like Receptors Cascades</a>

## Application Details

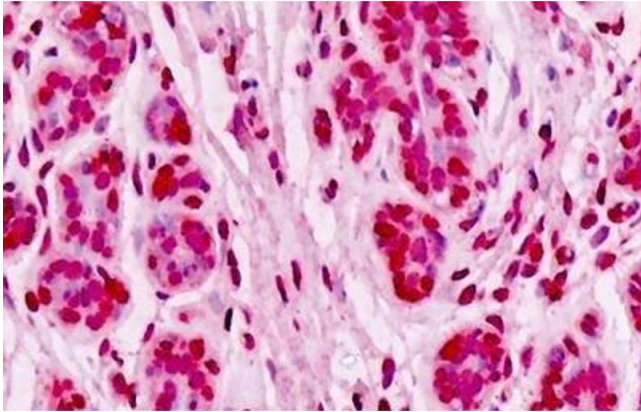
---

Application Notes:	Approved: ELISA, IHC, IHC-P (5 µg/mL), WB  Usage: Immunohistochemistry: Formalin-fixed paraffin-embedded sections. Sandwich ELISA: Recombinant protein. Western Blot: Transfected lysate, Recombinant protein.
Comment:	Target Species of Antibody: Human
Restrictions:	For Research Use only

## Handling

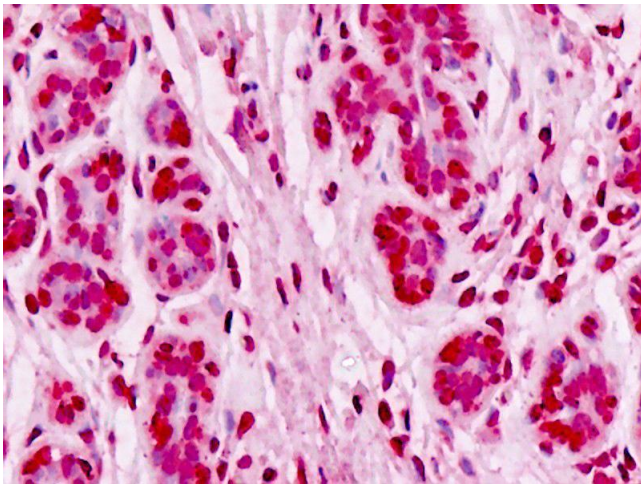
---

Format:	Liquid
Concentration:	Lot specific
Buffer:	PBS, pH 7.4.
Handling Advice:	Aliquot to avoid repeated freezing and thawing.
Storage:	4 °C, -20 °C
Storage Comment:	Short term 4°C, long term aliquot and store at -20°C, avoid freeze-thaw cycles.



#### Immunohistochemistry

**Image 1.** Human Breast, Epithelium: Formalin-Fixed, Paraffin-Embedded (FFPE)



#### Immunohistochemistry

**Image 2.** Anti-UBE2D1 / UBCH5 antibody IHC staining of human breast, epithelium. Immunohistochemistry of formalin-fixed, paraffin-embedded tissue after heat-induced antigen retrieval.