

Datasheet for ABIN1804467
anti-GPR125 antibody (AA 1098-1109)[Go to Product page](#)

2 Images

Overview

Quantity:	50 µg
Target:	GPR125
Binding Specificity:	AA 1098-1109
Reactivity:	Human, Mouse, Cow, Bat, Hamster, Horse, Monkey, Rabbit
Host:	Goat
Clonality:	Polyclonal
Conjugate:	This GPR125 antibody is un-conjugated
Application:	ELISA, Western Blotting (WB), Immunohistochemistry (Paraffin-embedded Sections) (IHC (p)), Immunohistochemistry (IHC)

Product Details

Brand:	IHC-plus™
Immunogen:	Synthetic peptide CTNKSASSFKNS from an internal region of human GPR125 (NP_660333.2). Percent identity by BLAST analysis: Human, Gorilla, Gibbon, Monkey, Marmoset, Mouse, Hamster, Elephant, Bovine, Bat, Horse, Rabbit (100%), Panda, Dog, Pig, Opossum, Turkey, Platypus, Xenopus (92%), Chicken (83%). Type of Immunogen: Synthetic peptide
Specificity:	Human GPR125.
Purification:	Immunoaffinity purified

Target Details

Target:	GPR125
Alternative Name:	ADGRA3 / GPR125 (GPR125 Products)
Background:	Name/Gene ID: ADGRA3 Subfamily: Orphan-B Family: GPCR Synonyms: ADGRA3, GPR125, TEM5L, G protein-coupled receptor 125, PGR21
Gene ID:	166647
NCBI Accession:	NP_660333
UniProt:	Q8IWK6

Application Details

Application Notes:	Approved: IHC, IHC-P (3.75 µg/mL), Peptide-ELISA (1:8000), WB (0.5 - 1.5 µg/mL) Usage: Peptide ELISA: antibody detection limit dilution 1:8000. Western Blot: Approx 140kD band observed in Human Ovary lysates (calculated MW of 146kD according to NP_660333.2). Recommended concentration: 0.5-1.5 µg/mL. An additional band of unknown identity was also consistently observed at 33kD. This band was successfully blocked by incubation with the immunizing peptide. We would appreciate any feedback from people in the field - have any such results been reported with other antibodies / lysates? Have any further splice variants / modified forms been reported?
Comment:	Target Species of Antibody: Human
Restrictions:	For Research Use only

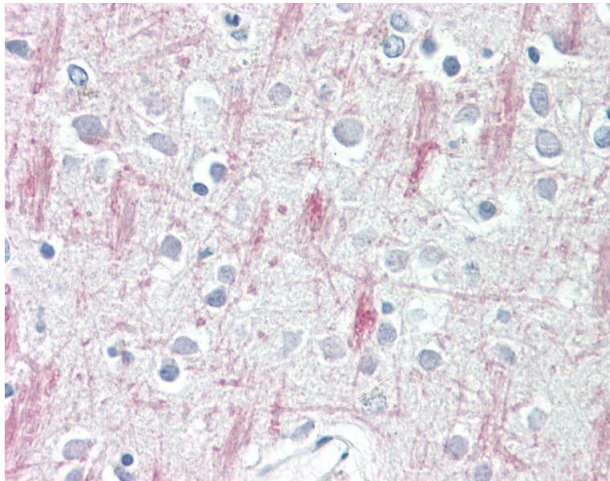
Handling

Format:	Liquid
Concentration:	Lot specific
Buffer:	Tris-buffered saline, pH 7.3, 0.5 % BSA, 0.02 % sodium azide
Preservative:	Sodium azide
Precaution of Use:	This product contains Sodium azide: a POISONOUS AND HAZARDOUS SUBSTANCE which should be handled by trained staff only.

Handling

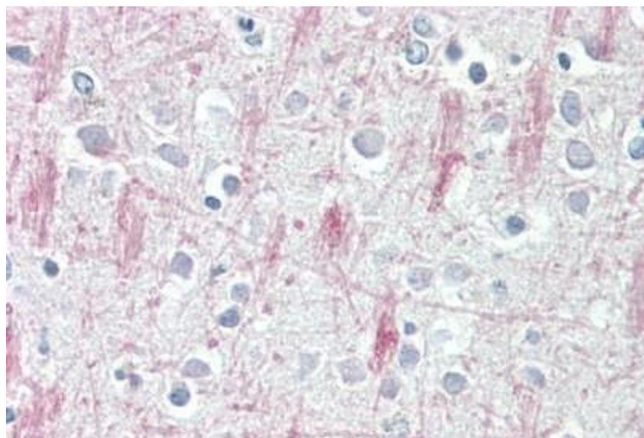
Handling Advice:	Avoid repeated freezing and thawing.
Storage:	-20 °C
Storage Comment:	Store at -20°C. Avoid freeze-thaw cycles.

Images



Immunohistochemistry

Image 1. Anti-GPR125 antibody IHC staining of human brain, cortex. Immunohistochemistry of formalin-fixed, paraffin-embedded tissue after heat-induced antigen retrieval.



Immunohistochemistry

Image 2. Human Brain, Cortex: Formalin-Fixed, Paraffin-Embedded (FFPE)