



[Go to Product page](#)

Datasheet for ABIN1804555

anti-Coronin 6 antibody (AA 337-365)

2 Images

Overview

Quantity:	200 µL
Target:	Coronin 6 (CORO6)
Binding Specificity:	AA 337-365
Reactivity:	Human, Mouse
Host:	Rabbit
Clonality:	Polyclonal
Conjugate:	This Coronin 6 antibody is un-conjugated
Application:	Western Blotting (WB), Immunohistochemistry (IHC), Immunohistochemistry (Paraffin-embedded Sections) (IHC (p))

Product Details

Brand:	IHC-plus™
Specificity:	This CORO6 antibody is generated from rabbits immunized with a KLH conjugated synthetic peptide between 337-365 amino acids from the C-terminal region of human CORO6.
Purification:	Protein A purified

Target Details

Target:	Coronin 6 (CORO6)
Alternative Name:	CORO6 (CORO6 Products)
Background:	Name/Gene ID: CORO6

Target Details

Synonyms: CORO6, Clipin-E, Coronin-6, Coronin 6, Coronin-like protein E

Gene ID: 84940

Application Details

Application Notes: Approved: IHC, IHC-P (5 µg/mL), WB (1:1000)

Comment: Target Species of Antibody: Human

Restrictions: For Research Use only

Handling

Format: Liquid

Concentration: Lot specific

Buffer: PBS, 0.09 % sodium azide

Preservative: Sodium azide

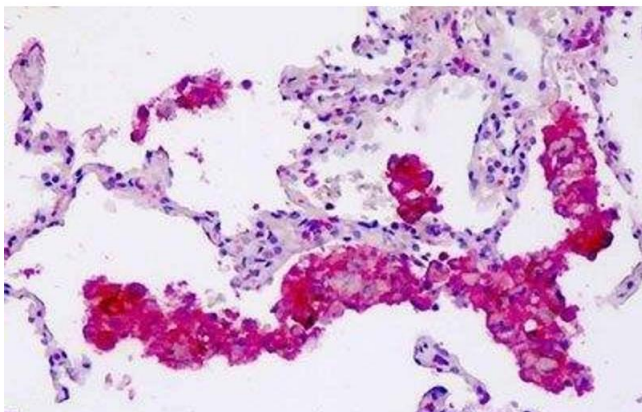
Precaution of Use: This product contains Sodium azide: a POISONOUS AND HAZARDOUS SUBSTANCE which should be handled by trained staff only.

Storage: 4 °C, -20 °C

Storage Comment: Maintain refrigerated at 2-8°C for up to 6 months. For long term storage store at -20°C.

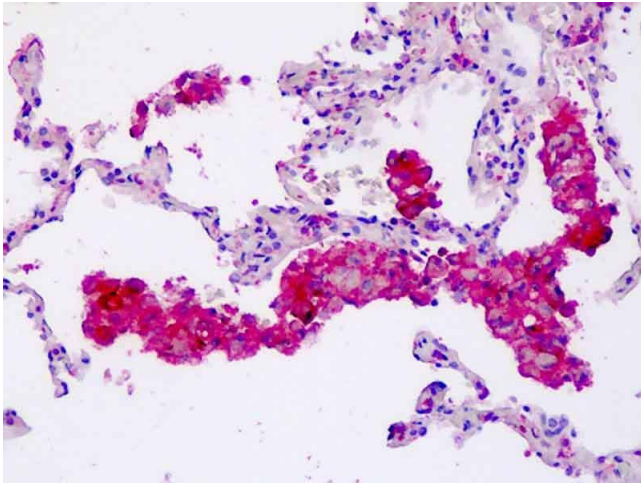
Expiry Date: 6 months

Images



Immunohistochemistry

Image 1. Human Lung, Macrophages: Formalin-Fixed, Paraffin-Embedded (FFPE)



Immunohistochemistry

Image 2. Anti-CORO6 antibody IHC staining of human lung, macrophages. Immunohistochemistry of formalin-fixed, paraffin-embedded tissue after heat-induced antigen retrieval.