



[Go to Product page](#)

Datasheet for ABIN1804576

anti-DEPDC5 antibody (AA 1404-1432)

1 Image

Overview

Quantity:	100 µL
Target:	DEPDC5
Binding Specificity:	AA 1404-1432
Reactivity:	Human
Host:	Rabbit
Clonality:	Polyclonal
Conjugate:	This DEPDC5 antibody is un-conjugated
Application:	Western Blotting (WB), Flow Cytometry (FACS), Immunohistochemistry (IHC), Immunohistochemistry (Paraffin-embedded Sections) (IHC (p))

Product Details

Brand:	IHC-plus™
Specificity:	This DEPDC5 antibody is generated from rabbits immunized with a KLH conjugated synthetic peptide between 1404-1432 amino acids from the C-terminal region of human DEPDC5.
Purification:	Protein A purified

Target Details

Target:	DEPDC5
Alternative Name:	DEPDC5 (DEPDC5 Products)
Background:	Name/Gene ID: DEPDC5

Target Details

Synonyms: DEPDC5, DEP domain containing 5, DEP.5, KIAA0645

Gene ID: 9681

UniProt: [O75140](#)

Application Details

Application Notes: Approved: Flo (1:10 - 1:50), IHC, IHC-P (5 µg/mL), WB (1:1000)

Comment: Target Species of Antibody: Human

Restrictions: For Research Use only

Handling

Format: Liquid

Concentration: Lot specific

Buffer: PBS, 0.09 % sodium azide

Preservative: Sodium azide

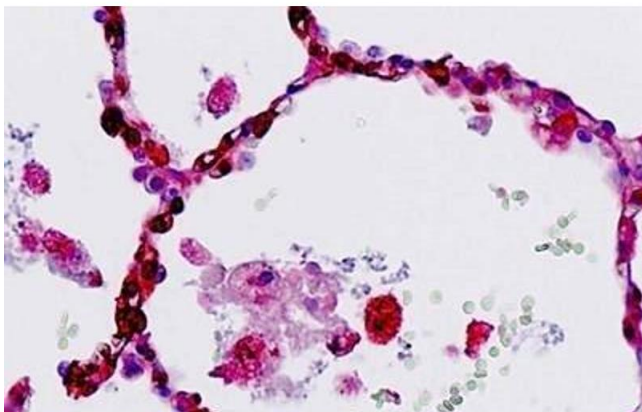
Precaution of Use: This product contains Sodium azide: a POISONOUS AND HAZARDOUS SUBSTANCE which should be handled by trained staff only.

Storage: 4 °C, -20 °C

Storage Comment: Maintain refrigerated at 2-8°C for up to 6 months. For long term storage store at -20°C.

Expiry Date: 6 months

Images



Immunohistochemistry

Image 1. Human Lung, Alveoli and Macrophages: Formalin-Fixed, Paraffin-Embedded (FFPE)