

Datasheet for ABIN1804629
anti-BCL3 antibody (AA 2-13)[Go to Product page](#)

2 Images

Overview

Quantity:	50 µL
Target:	BCL3
Binding Specificity:	AA 2-13
Reactivity:	Human
Host:	Rabbit
Clonality:	Polyclonal
Conjugate:	This BCL3 antibody is un-conjugated
Application:	Western Blotting (WB), Immunohistochemistry (IHC), Immunohistochemistry (Paraffin-embedded Sections) (IHC (p))

Product Details

Brand:	IHC-plus™
Immunogen:	Synthetic peptides, corresponding to amino acids 2-13 and 107-120 of Human Bcl3 Type of Immunogen: Synthetic peptide
Isotype:	IgG
Specificity:	This Polyclonal antibody is directed against human Bcl 3 protein. The product was purified from serum by protein A chromatography. Expect reactivity with human Bcl 3. Cross-reactivity with Bcl 3 from other sources has not been determined.
Purification:	Affinity purified

Target Details

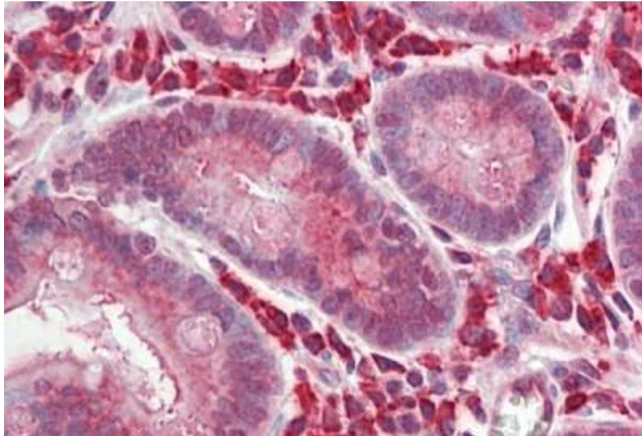
Target:	BCL3
Alternative Name:	BCL3 / BCL-3 (BCL3 Products)
Background:	Name/Gene ID: BCL3 Family: Cancer Synonyms: BCL3, B-cell CLL/lymphoma 3, B-cell leukemia/lymphoma 3, B-cell lymphoma 3 protein, BCL-3, BCL4, D19S37, Proto-oncogene BCL3
Gene ID:	602
UniProt:	P20749
Pathways:	NF-kappaB Signaling , Maintenance of Protein Location , Protein targeting to Nucleus

Application Details

Application Notes:	Approved: IHC, IHC-P (5 µg/mL), WB (1:1000)
Comment:	Target Species of Antibody: Human
Restrictions:	For Research Use only

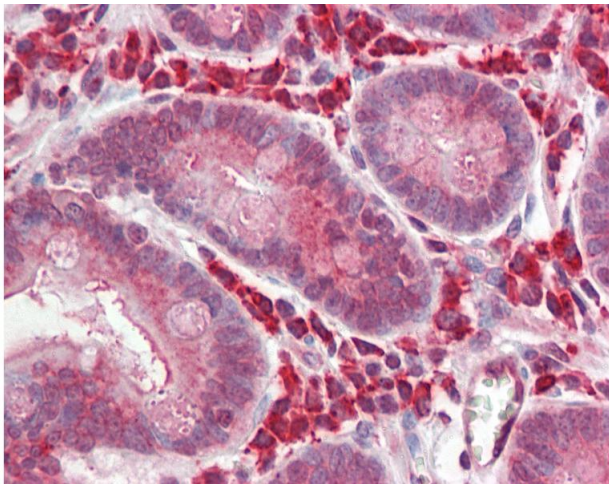
Handling

Format:	Liquid
Concentration:	Lot specific
Buffer:	PBS, pH 7.4, 0.02 % sodium azide
Preservative:	Sodium azide
Precaution of Use:	This product contains Sodium azide: a POISONOUS AND HAZARDOUS SUBSTANCE which should be handled by trained staff only.
Storage:	-20 °C
Storage Comment:	Store at -20°C for up to 1 year.
Expiry Date:	12 months



Immunohistochemistry

Image 1. Human Small Intestine: Formalin-Fixed, Paraffin-Embedded (FFPE)



Immunohistochemistry

Image 2. Human Small Intestine: Formalin-Fixed, Paraffin-Embedded (FFPE)