



[Go to Product page](#)

Datasheet for ABIN1804633
anti-GABPA antibody (AA 18-29)

2 Images

Overview

Quantity:	1 each
Target:	GABPA
Binding Specificity:	AA 18-29
Reactivity:	Human, Rat, Mouse
Host:	Rabbit
Clonality:	Polyclonal
Conjugate:	This GABPA antibody is un-conjugated
Application:	Western Blotting (WB), Immunohistochemistry (IHC), Immunohistochemistry (Paraffin-embedded Sections) (IHC (p)), Immunocytochemistry (ICC), Flow Cytometry (FACS)

Product Details

Brand:	IHC-plus™
Immunogen:	human Nrf2 N-terminal amino acids 18-29
Isotype:	IgG
Specificity:	Detects both poly-ubiquitination Nrf2 at 90 kDa and native Nrf2 at 67 kDa.
Purification:	Affinity purified

Target Details

Target:	GABPA
Alternative Name:	GABPA / NRF2 (GABPA Products)

Target Details

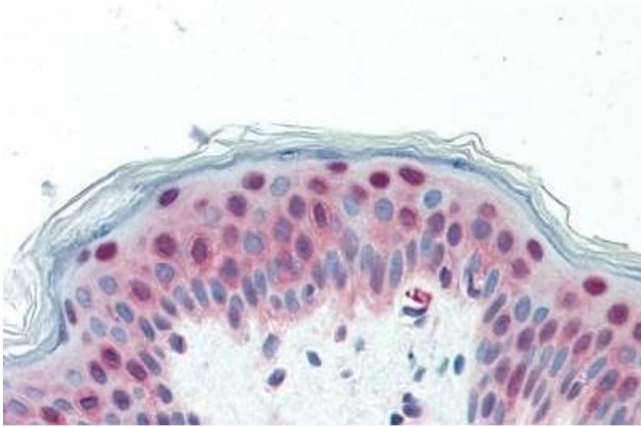
Background:	Name/Gene ID: GABPA Synonyms: GABPA, E4TF1A, E4TF1-60, GA-binding protein alpha chain, NRF2A, RCH04A07, GABP subunit alpha, NFT2, NRF2, Transcription factor E4TF1-60
Gene ID:	2551
UniProt:	Q06546
Pathways:	Myometrial Relaxation and Contraction

Application Details

Application Notes:	Approved: Flo, ICC, IHC, IHC-P (5 µg/mL), WB (1:200) Usage: Resuspend the IgG in 500 µL of purified water prior to use. Sufficient antibody is provided for 10 western blots.
Comment:	Target Species of Antibody: Human
Restrictions:	For Research Use only

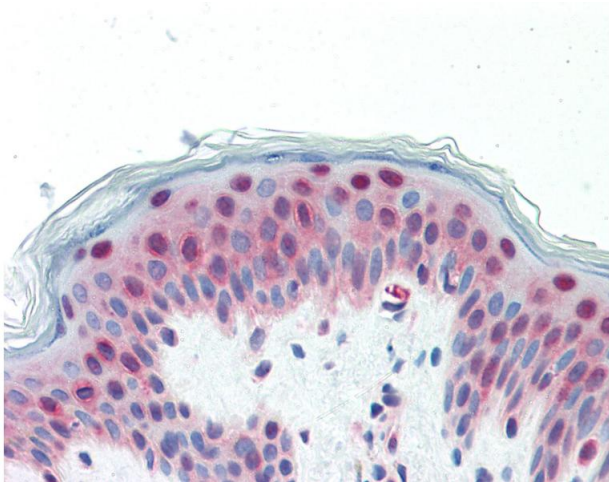
Handling

Format:	Liquid
Concentration:	Lot specific
Buffer:	TBS, pH 7.4, containing 50 % glycerol, 0.1 % BSA, and 0.02 % sodium azide
Preservative:	Sodium azide
Precaution of Use:	This product contains Sodium azide: a POISONOUS AND HAZARDOUS SUBSTANCE which should be handled by trained staff only.
Handling Advice:	Aliquot to avoid repeated freezing and thawing.
Storage:	4 °C, -20 °C
Storage Comment:	Short term 4°C, long term aliquot and store at -20°C, avoid freeze-thaw cycles.



Immunohistochemistry

Image 1. Human Skin: Formalin-Fixed, Paraffin-Embedded (FFPE)



Immunohistochemistry

Image 2. Anti-GABPA / NRF2 antibody IHC staining of human skin. Immunohistochemistry of formalin-fixed, paraffin-embedded tissue after heat-induced antigen retrieval.