



[Go to Product page](#)

Datasheet for ABIN1804639

anti-SAE1 antibody

2 Images

Overview

Quantity:	50 µL
Target:	SAE1
Reactivity:	Human
Host:	Mouse
Clonality:	Monoclonal
Conjugate:	This SAE1 antibody is un-conjugated
Application:	Western Blotting (WB), Immunohistochemistry (IHC), Immunofluorescence (IF), Immunohistochemistry (Paraffin-embedded Sections) (IHC (p))

Product Details

Brand:	IHC-plus™
Immunogen:	Full length human recombinant protein of human SAE1(NP_005491) produced in HEK293T cell. Type of Immunogen: Recombinant protein
Clone:	1G8
Isotype:	IgG2b
Specificity:	Human SAE1
Purification:	Protein A/G purified

Target Details

Target:	SAE1
---------	------

Target Details

Alternative Name: [SAE1 \(SAE1 Products\)](#)

Background: Name/Gene ID: SAE1

Synonyms: SAE1, Activator of SUMO1, AOS1, UBLE1A, HSPC140, SUA1

Gene ID: 10055

NCBI Accession: [NP_005491](#)

UniProt: [Q9UBE0](#)

Application Details

Application Notes: Approved: IF (1:100), IHC, IHC-P (10 µg/mL), WB (1:4000)

Comment: Target Species of Antibody: Human

Restrictions: For Research Use only

Handling

Format: Liquid

Concentration: Lot specific

Buffer: PBS, pH 7.3, 1 % BSA, 50 % glycerol, 0.02 % sodium azide

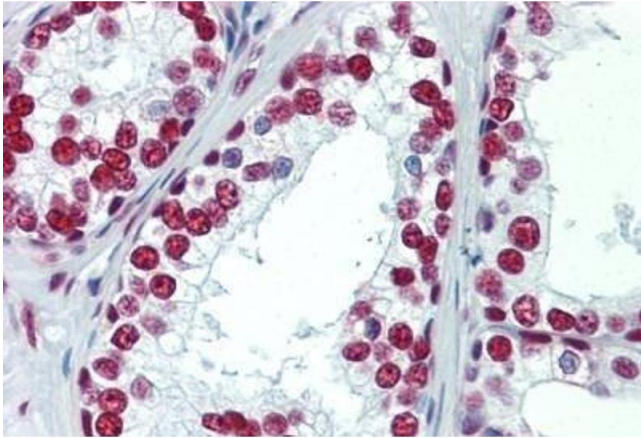
Preservative: Sodium azide

Precaution of Use: This product contains Sodium azide: a POISONOUS AND HAZARDOUS SUBSTANCE which should be handled by trained staff only.

Handling Advice: Avoid repeated freezing and thawing.

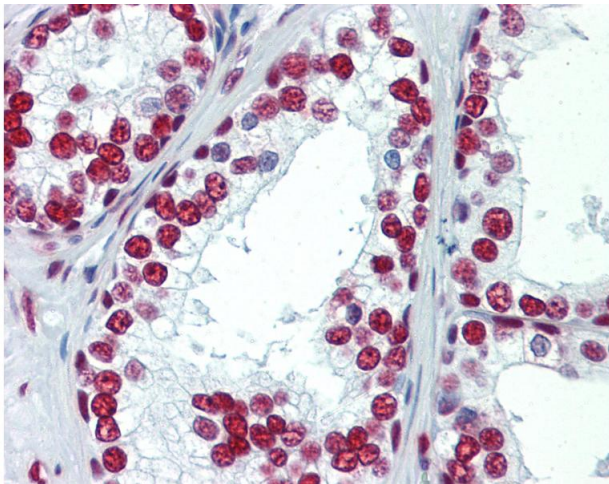
Storage: -20 °C

Storage Comment: Store at -20°C. Avoid freeze-thaw cycles.



Immunohistochemistry

Image 1. Human Prostate: Formalin-Fixed, Paraffin-Embedded (FFPE)



Immunohistochemistry

Image 2. Anti-SAE1 antibody IHC staining of human prostate. Immunohistochemistry of formalin-fixed, paraffin-embedded tissue after heat-induced antigen retrieval.