



[Go to Product page](#)

Datasheet for ABIN1804644
anti-ABCB1 antibody (AA 995-1280)

2 Images

Overview

Quantity:	50 µL
Target:	ABCB1
Binding Specificity:	AA 995-1280
Reactivity:	Human
Host:	Mouse
Clonality:	Monoclonal
Conjugate:	This ABCB1 antibody is un-conjugated
Application:	Western Blotting (WB), Immunohistochemistry (IHC), Immunohistochemistry (Paraffin-embedded Sections) (IHC (p))

Product Details

Brand:	IHC-plus™
Immunogen:	Human recombinant protein fragment corresponding to amino acids 995-1280 of human ABCB1 (NP_000918) produced in SF9 cell. Type of Immunogen: Recombinant protein
Clone:	6H2
Isotype:	IgG2a
Specificity:	Human ABCB1 / MDR1
Purification:	Protein A/G purified

Target Details

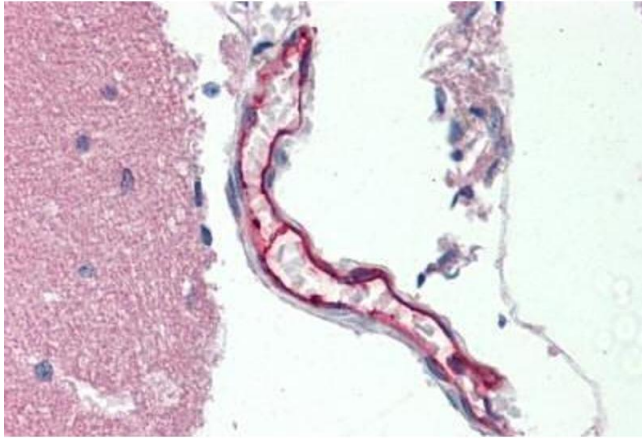
Target:	ABCB1
Alternative Name:	ABCB1 / MDR1 / P Glycoprotein (ABCB1 Products)
Background:	Name/Gene ID: ABCB1 Subfamily: ATP-binding cassette - ABCB/MDR Family: Transporter Synonyms: ABCB1, ABC20, Abcb1b, CLCS, Colchicin sensitivity, CD243, Doxorubicin resistance, IBD13, gp170, MDR1, Multidrug resistance protein 1, P glycoprotein, P-glycoprotein 1, P-GP, CD243 antigen, PGY1
Gene ID:	5243
NCBI Accession:	NP_000918
UniProt:	P08183

Application Details

Application Notes:	Approved: IHC, IHC-P (10 µg/mL), WB (1:1000)
Comment:	Target Species of Antibody: Human
Restrictions:	For Research Use only

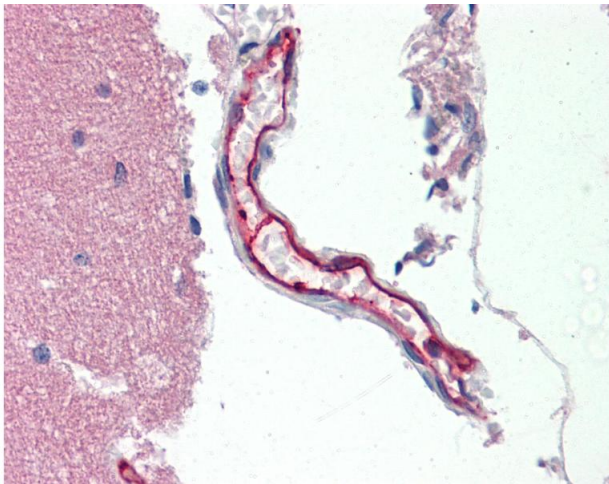
Handling

Format:	Liquid
Concentration:	Lot specific
Buffer:	PBS, pH 7.3, 1 % BSA, 50 % glycerol, 0.02 % sodium azide
Preservative:	Sodium azide
Precaution of Use:	This product contains Sodium azide: a POISONOUS AND HAZARDOUS SUBSTANCE which should be handled by trained staff only.
Handling Advice:	Avoid repeated freezing and thawing.
Storage:	-20 °C
Storage Comment:	Store at -20°C. Avoid freeze-thaw cycles.



Immunohistochemistry

Image 1. Human Vessel: Formalin-Fixed, Paraffin-Embedded (FFPE)



Immunohistochemistry

Image 2. Anti-ABCB1 / MDR1 / P Glycoprotein antibody IHC staining of human vessel. Immunohistochemistry of formalin-fixed, paraffin-embedded tissue after heat-induced antigen retrieval.