

Datasheet for ABIN1804672
anti-NPC1L1 antibody (Internal Region)



[Go to Product page](#)

2 Images

Overview

Quantity:	50 µL
Target:	NPC1L1
Binding Specificity:	Internal Region
Reactivity:	Human, Mouse, Rat
Host:	Rabbit
Clonality:	Polyclonal
Conjugate:	This NPC1L1 antibody is un-conjugated
Application:	Western Blotting (WB), Immunohistochemistry (IHC), Immunohistochemistry (Paraffin-embedded Sections) (IHC (p))

Product Details

Brand:	IHC-plus™
Immunogen:	A synthetic peptide made to an internal region of rat NPC1L1 (between residues 1000-1100). Type of Immunogen: Synthetic peptide
Specificity:	This antibody is specific for NPC1L1 protein. Species cross-reactivity: This antibody reacts with rat NPC1L1 protein. There is 100 % homology of the immunogen used for this production and the mouse protein sequence. Therefore, reactivity with mouse protein is likely. There is 93 % homology for human.
Purification:	Immunoaffinity purified

Target Details

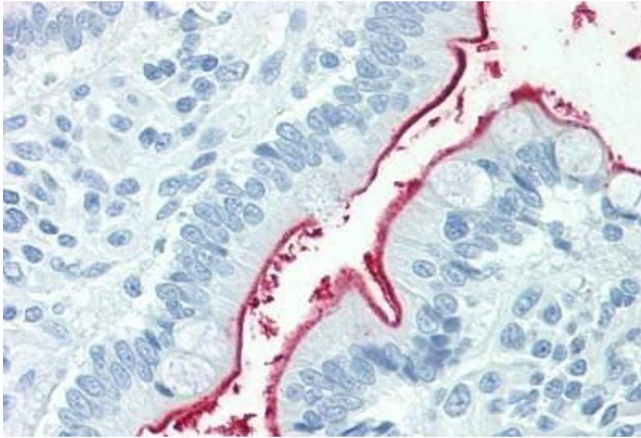
Target:	NPC1L1
Alternative Name:	NPC1L1 (NPC1L1 Products)
Background:	Name/Gene ID: NPC1L1 Family: Transporter Synonyms: NPC1L1, Niemann-Pick C1-like protein 1, NPC11L1, NPC1-like 1
Gene ID:	29881
UniProt:	Q9UHC9

Application Details

Application Notes:	Approved: IHC, IHC-P (5 µg/mL), WB Usage: Suitable for use in Western Blot.
Comment:	Target Species of Antibody: Rat
Restrictions:	For Research Use only

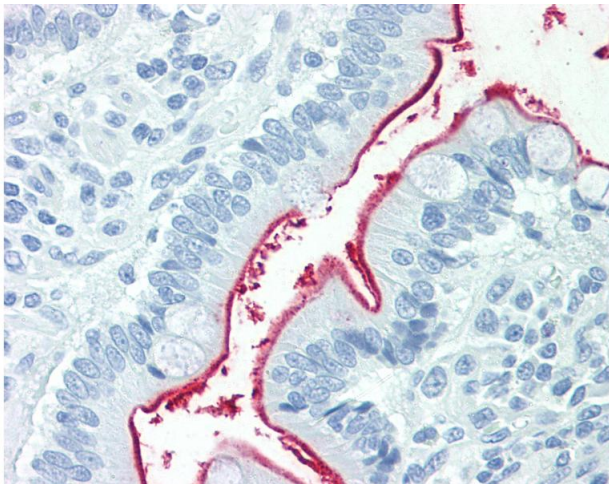
Handling

Format:	Liquid
Concentration:	Lot specific
Buffer:	Tris-citrate/phosphate, pH 7.5, 0.1 % sodium azide.
Preservative:	Sodium azide
Precaution of Use:	This product contains Sodium azide: a POISONOUS AND HAZARDOUS SUBSTANCE which should be handled by trained staff only.
Handling Advice:	Aliquot to avoid repeated freezing and thawing. Store undiluted.
Storage:	4 °C, -20 °C
Storage Comment:	Short term 4°C, long term aliquot and store at -20°C, avoid freeze-thaw cycles. Store undiluted.



Immunohistochemistry

Image 1. Human Small Intestine: Formalin-Fixed, Paraffin-Embedded (FFPE)



Immunohistochemistry

Image 2. Anti-NPC1L1 antibody IHC staining of human small intestine. Immunohistochemistry of formalin-fixed, paraffin-embedded tissue after heat-induced antigen retrieval.