



Datasheet for ABIN1804699
anti-SLC6A19 antibody



[Go to Product page](#)

1 Image

Overview

Quantity:	50 µL
Target:	SLC6A19
Reactivity:	Human
Host:	Rabbit
Clonality:	Polyclonal
Conjugate:	This SLC6A19 antibody is un-conjugated
Application:	Immunohistochemistry (IHC), Flow Cytometry (FACS), Immunocytochemistry (ICC), Immunohistochemistry (Paraffin-embedded Sections) (IHC (p))

Product Details

Brand:	IHC-plus™
Immunogen:	Human SLC6A19-derived synthetic peptide. Type of Immunogen: Synthetic peptide
Isotype:	IgG
Specificity:	Human SLC6A19
Purification:	Affinity purified

Target Details

Target:	SLC6A19
Alternative Name:	SLC6A19 (SLC6A19 Products)

Target Details

Background: Name/Gene ID: SLC6A19

Synonyms: SLC6A19

Gene ID: 340024

UniProt: [Q695T7](#)

Application Details

Application Notes: Approved: Flo (1:1000), ICC (1:1000), IHC, IHC-P (1:100)

Usage: IHC: Heat treatment is necessary for paraffin-embedded sections,

Not recommended for: WB

Comment: Target Species of Antibody: Human

Restrictions: For Research Use only

Handling

Format: Liquid

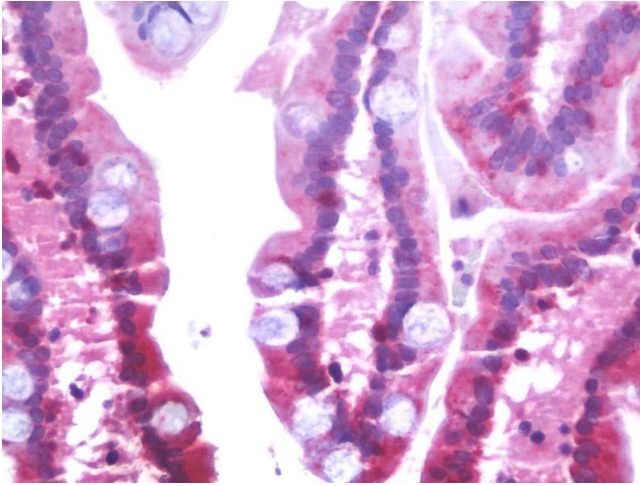
Concentration: Lot specific

Buffer: PBS, pH 7.2, 50 % glycerol

Handling Advice: Avoid repeated freezing and thawing.

Storage: 4 °C, -20 °C

Storage Comment: Short term: 4°C. Long term: Store at -20°C. Avoid freeze-thaw cycles.



Immunohistochemistry

Image 1. Anti-SLC6A19 antibody IHC staining of human small intestine. Immunohistochemistry of formalin-fixed, paraffin-embedded tissue after heat-induced antigen retrieval. Antibody dilution 1:100.