



[Go to Product page](#)

Datasheet for ABIN1804759
anti-L1TD1 antibody (C-Term)

1 Image

Overview

Quantity:	0.05 mg
Target:	L1TD1
Binding Specificity:	C-Term
Reactivity:	Human
Host:	Rabbit
Clonality:	Polyclonal
Conjugate:	This L1TD1 antibody is un-conjugated
Application:	ELISA, Western Blotting (WB), Immunohistochemistry (IHC), Immunohistochemistry (Paraffin-embedded Sections) (IHC (p))

Product Details

Brand:	IHC-plus™
Isotype:	IgG
Specificity:	L1TD1 antibody is predicted to not cross-react with other ECAT protein family members
Purification:	Immunoaffinity purified

Target Details

Target:	L1TD1
Alternative Name:	L1TD1 (L1TD1 Products)
Background:	Name/Gene ID: L1TD1

Target Details

Synonyms: L1TD1, ECAT11, ES cell-associated protein 11, RP5-1155K23.3

Gene ID: 54596

UniProt: [Q5T7N2](#)

Application Details

Application Notes: Approved: ELISA, IHC, IHC-P (5 µg/mL), WB (1 µg/mL)

Comment: Target Species of Antibody: Human

Restrictions: For Research Use only

Handling

Format: Liquid

Concentration: Lot specific

Buffer: PBS, 0.02 % sodium azide

Preservative: Sodium azide

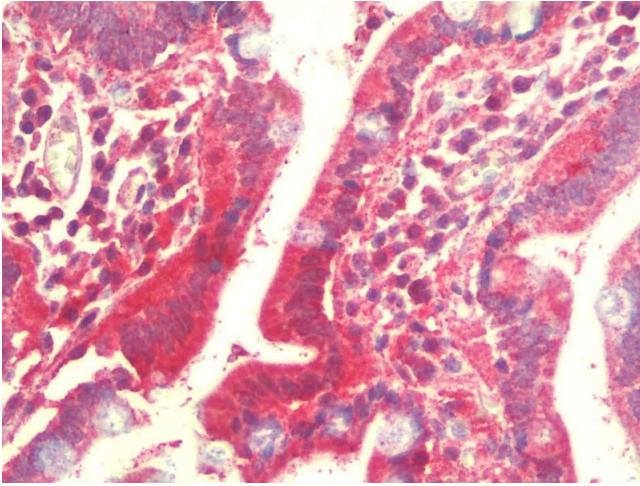
Precaution of Use: This product contains Sodium azide: a POISONOUS AND HAZARDOUS SUBSTANCE which should be handled by trained staff only.

Handling Advice: Aliquot to avoid repeated freezing and thawing. Store undiluted.

Storage: 4 °C, -20 °C

Storage Comment: Store at 4°C for 3 months and -20°C, stable for up to 1 year. Avoid repeated freeze-thaw cycles.

Expiry Date: 12 months



Immunohistochemistry

Image 1. Anti-L1TD1 antibody IHC staining of human small intestine. Immunohistochemistry of formalin-fixed, paraffin-embedded tissue after heat-induced antigen retrieval. Antibody concentration 5 ug/ml.