



[Go to Product page](#)

Datasheet for ABIN1804767

anti-TMEM147 antibody (Internal Region)

1 Image

Overview

Quantity:	50 µg
Target:	TMEM147
Binding Specificity:	Internal Region
Reactivity:	Human, Mouse, Rat
Host:	Rabbit
Clonality:	Polyclonal
Conjugate:	This TMEM147 antibody is un-conjugated
Application:	Western Blotting (WB), ELISA, Immunohistochemistry (Paraffin-embedded Sections) (IHC (p)), Immunohistochemistry (IHC)

Product Details

Brand:	IHC-plus™
Isotype:	IgG
Purification:	Immunoaffinity purified

Target Details

Target:	TMEM147
Alternative Name:	TMEM147 (TMEM147 Products)
Background:	Name/Gene ID: TMEM147

Synonyms: TMEM147, Transmembrane protein 147, NIFIE14, Protein NIFIE 14

Target Details

Gene ID: 10430

UniProt: [Q9BVK8](#)

Application Details

Application Notes: Approved: ELISA, IHC, IHC-P (5 µg/mL), WB (1 - 2 µg/mL)

Comment: Target Species of Antibody: Human

Restrictions: For Research Use only

Handling

Format: Liquid

Concentration: Lot specific

Buffer: PBS, 0.02 % sodium azide

Preservative: Sodium azide

Precaution of Use: This product contains Sodium azide: a POISONOUS AND HAZARDOUS SUBSTANCE which should be handled by trained staff only.

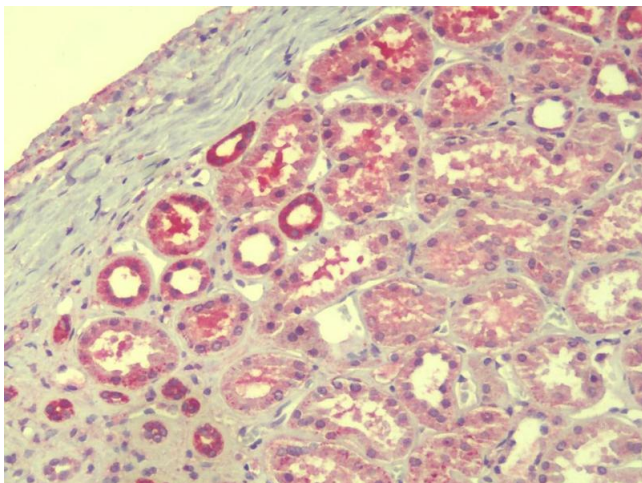
Handling Advice: Aliquot to avoid repeated freezing and thawing. Store undiluted.

Storage: 4 °C, -20 °C

Storage Comment: Store at 4°C for 3 months and -20°C, stable for up to 1 year. Avoid repeated freeze-thaw cycles.

Expiry Date: 12 months

Images



Immunohistochemistry

Image 1. Anti-TMEM147 antibody IHC staining of human kidney. Immunohistochemistry of formalin-fixed, paraffin-embedded tissue after heat-induced antigen retrieval. Antibody concentration 5 µg/ml.