



Datasheet for ABIN1804790
anti-LC3B antibody (AA 100-125)



[Go to Product page](#)

2 Images

Overview

Quantity:	200 µL
Target:	LC3B (MAP1LC3B)
Binding Specificity:	AA 100-125
Reactivity:	Human, Mouse
Host:	Rabbit
Clonality:	Polyclonal
Conjugate:	This LC3B antibody is un-conjugated
Application:	Western Blotting (WB), Immunohistochemistry (IHC), Immunofluorescence (IF), Immunohistochemistry (Paraffin-embedded Sections) (IHC (p))

Product Details

Brand:	IHC-plus™
Specificity:	This Cleaved-APG8a/b antibody is generated from rabbits immunized with a KLH conjugated synthetic peptide between 100-125 amino acids from human Cleaved-APG8a/b.
Purification:	Protein A purified

Target Details

Target:	LC3B (MAP1LC3B)
Alternative Name:	MAP1LC3B / LC3B (MAP1LC3B Products)
Background:	Name/Gene ID: MAP1LC3B

Target Details

Synonyms: MAP1LC3B, ATG8F, LC3B, MAP1A/1BLC3, MAP1A/MAP1B LC3 B, MAP1A/MAP1B light chain 3 B, MAP1ALC3, MAP1LC3B-a

Gene ID: 81631

UniProt: [Q9GZQ8](#)

Pathways: [Autophagy](#)

Application Details

Application Notes: Approved: IF (1:100), IHC, IHC-P (1:50 - 1:100), WB (1:1000)

Comment: Target Species of Antibody: Human

Restrictions: For Research Use only

Handling

Format: Liquid

Concentration: Lot specific

Buffer: PBS, 0.09 % sodium azide

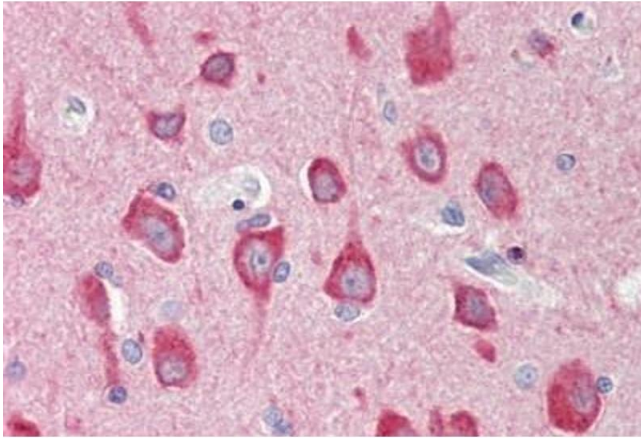
Preservative: Sodium azide

Precaution of Use: This product contains Sodium azide: a POISONOUS AND HAZARDOUS SUBSTANCE which should be handled by trained staff only.

Storage: 4 °C,-20 °C

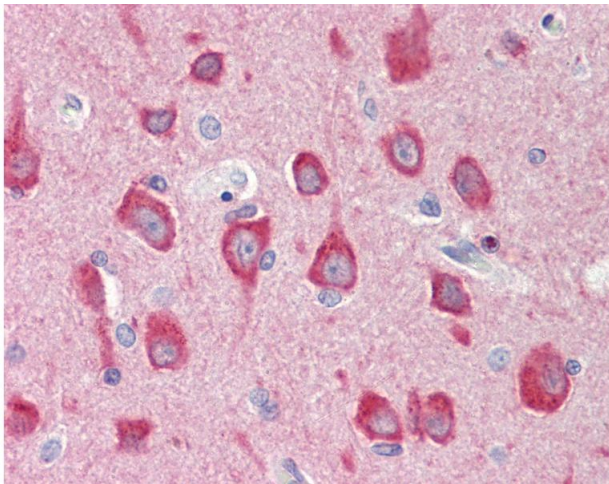
Storage Comment: Maintain refrigerated at 2-8°C for up to 6 months. For long term storage store at -20°C.

Expiry Date: 6 months



Immunohistochemistry

Image 1. Human Brain, Cortex: Formalin-Fixed, Paraffin-Embedded (FFPE)



Immunohistochemistry

Image 2. Anti-MAP1LC3B / LC3B antibody IHC staining of human brain, cortex. Immunohistochemistry of formalin-fixed, paraffin-embedded tissue after heat-induced antigen retrieval.