



[Go to Product page](#)

Datasheet for ABIN1804824  
**anti-ROPN1L antibody (AA 32-60)**

1 Image

### Overview

Quantity:	200 µL
Target:	ROPN1L
Binding Specificity:	AA 32-60
Reactivity:	Human, Mouse
Host:	Rabbit
Clonality:	Polyclonal
Conjugate:	This ROPN1L antibody is un-conjugated
Application:	Western Blotting (WB), Immunohistochemistry (IHC), Immunohistochemistry (Paraffin-embedded Sections) (IHC (p))

### Product Details

Brand:	IHC-plus™
Specificity:	This ROPN1L antibody is generated from rabbits immunized with a KLH conjugated synthetic peptide between 32-60 amino acids from the N-terminal region of human ROPN1L.
Purification:	Protein A purified

### Target Details

Target:	ROPN1L
Alternative Name:	ROPN1L ( <a href="#">ROPN1L Products</a> )
Background:	Name/Gene ID: ROPN1L

## Target Details

---

Synonyms: ROPN1L, AKAP-associated sperm protein, ROPN1-like protein, Ropporin-1-like protein, RSPH11, ASP, Radial spoke head 11 homolog, Ropporin 1-like

---

Gene ID: 83853

---

UniProt: [Q96C74](#)

---

## Application Details

---

Application Notes: Approved: IHC, IHC-P (1:10 - 1:100), WB (1:1000)

---

Comment: Target Species of Antibody: Human

---

Restrictions: For Research Use only

---

## Handling

---

Format: Liquid

---

Concentration: Lot specific

---

Buffer: PBS, 0.09 % sodium azide

---

Preservative: Sodium azide

---

Precaution of Use: This product contains Sodium azide: a POISONOUS AND HAZARDOUS SUBSTANCE which should be handled by trained staff only.

---

Storage: 4 °C,-20 °C

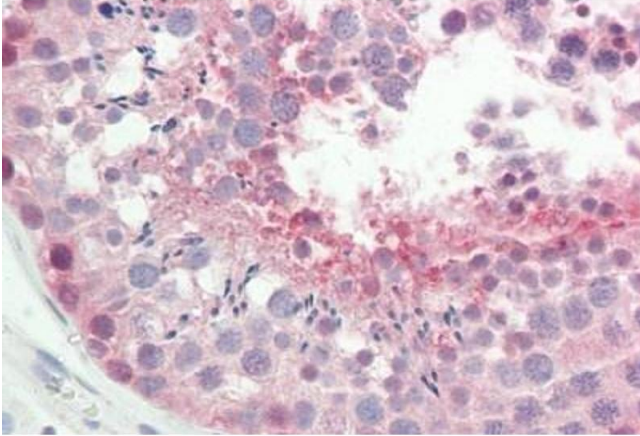
---

Storage Comment: Maintain refrigerated at 2-8°C for up to 6 months. For long term storage store at -20°C.

---

Expiry Date: 6 months

---



### Immunohistochemistry

**Image 1.** Human Testis: Formalin-Fixed, Paraffin-Embedded (FFPE)