



[Go to Product page](#)

Datasheet for ABIN1804828

## anti-SLIT1 antibody (AA 84-113)

### 2 Images

#### Overview

Quantity:	200 µL
Target:	SLIT1
Binding Specificity:	AA 84-113
Reactivity:	Human, Mouse
Host:	Rabbit
Clonality:	Polyclonal
Application:	Western Blotting (WB), Immunohistochemistry (IHC), Immunohistochemistry (Paraffin-embedded Sections) (IHC (p))

#### Product Details

Brand:	IHC-plus™
Specificity:	This SLIT1 antibody is generated from rabbits immunized with a KLH conjugated synthetic peptide between 84-113 amino acids from the N-terminal region of human SLIT1.
Purification:	Protein A purified

#### Target Details

Target:	SLIT1
Alternative Name:	SLIT1 / SLIT-1 ( <a href="#">SLIT1 Products</a> )
Background:	Name/Gene ID: SLIT1

Synonyms: SLIT1, KIAA0813, MEGF4, Slit (Drosophila) homolog 1, Slit homolog 1 protein, SLIT-

## Target Details

---

1, SLIL1, Slit homolog 1 (Drosophila)

Gene ID: 6585

UniProt: [O75093](#)

Pathways: [Regulation of Cell Size](#)

## Application Details

---

Application Notes: Approved: IHC, IHC-P (1:10 - 1:100), WB (1:1000)

Comment: Target Species of Antibody: Human

Restrictions: For Research Use only

## Handling

---

Format: Liquid

Concentration: Lot specific

Buffer: PBS, 0.09 % sodium azide

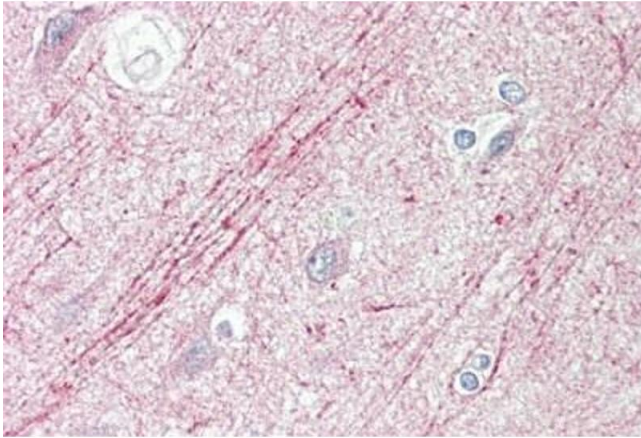
Preservative: Sodium azide

Precaution of Use: This product contains Sodium azide: a POISONOUS AND HAZARDOUS SUBSTANCE which should be handled by trained staff only.

Storage: 4 °C,-20 °C

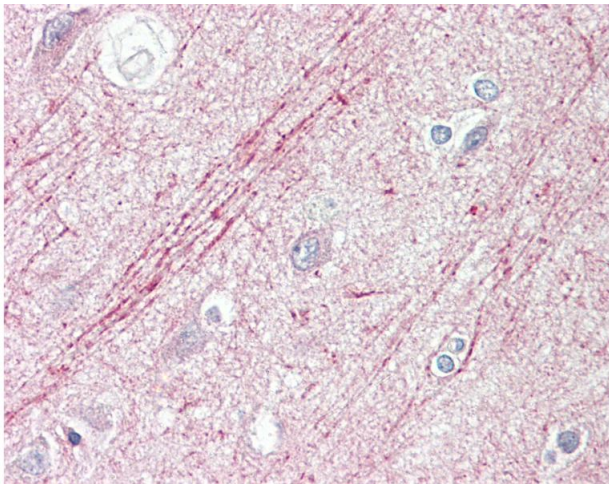
Storage Comment: Maintain refrigerated at 2-8°C for up to 6 months. For long term storage store at -20°C.

Expiry Date: 6 months



#### Immunohistochemistry

**Image 1.** Human Brain, Cortex: Formalin-Fixed, Paraffin-Embedded (FFPE)



#### Immunohistochemistry

**Image 2.** Anti-SLIT1 / SLIT-1 antibody IHC staining of human brain, cortex. Immunohistochemistry of formalin-fixed, paraffin-embedded tissue after heat-induced antigen retrieval.