

Datasheet for ABIN1804829
anti-SLC2A13 antibody (AA 268-297)[Go to Product page](#)

2 Images

Overview

Quantity:	200 µL
Target:	SLC2A13
Binding Specificity:	AA 268-297
Reactivity:	Human, Mouse
Host:	Rabbit
Clonality:	Polyclonal
Conjugate:	This SLC2A13 antibody is un-conjugated
Application:	Western Blotting (WB), Immunohistochemistry (IHC), Immunohistochemistry (Paraffin-embedded Sections) (IHC (p))

Product Details

Brand:	IHC-plus™
Specificity:	This SLC2A13 antibody is generated from rabbits immunized with a KLH conjugated synthetic peptide between 268-297 amino acids from the Central region of human SLC2A13.
Purification:	Protein A purified

Target Details

Target:	SLC2A13
Alternative Name:	SLC2A13 / HMIT / GLUT13 (SLC2A13 Products)
Background:	Name/Gene ID: SLC2A13 Subfamily: Sugar transporter

Target Details

Family: Transporter

Synonyms: SLC2A13, H(+)-myo-inositol symporter, HMIT, Glut13

Gene ID: 114134

UniProt: [Q96QE2](#)

Application Details

Application Notes: Approved: IHC, IHC-P (1:100), WB (1:1000)

Comment: Target Species of Antibody: Human

Restrictions: For Research Use only

Handling

Format: Liquid

Concentration: Lot specific

Buffer: PBS, 0.09 % sodium azide

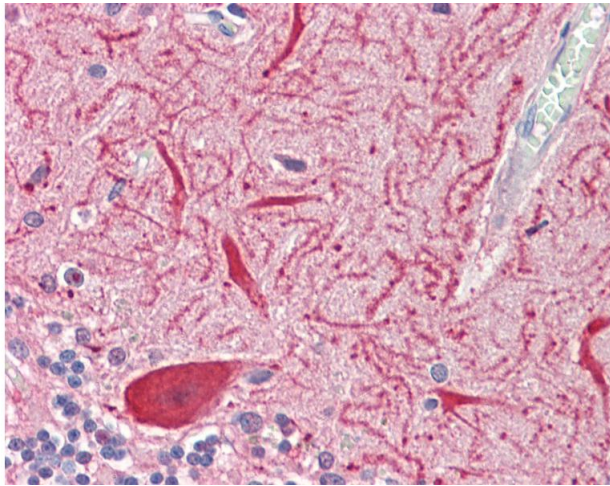
Preservative: Sodium azide

Precaution of Use: This product contains Sodium azide: a POISONOUS AND HAZARDOUS SUBSTANCE which should be handled by trained staff only.

Storage: 4 °C, -20 °C

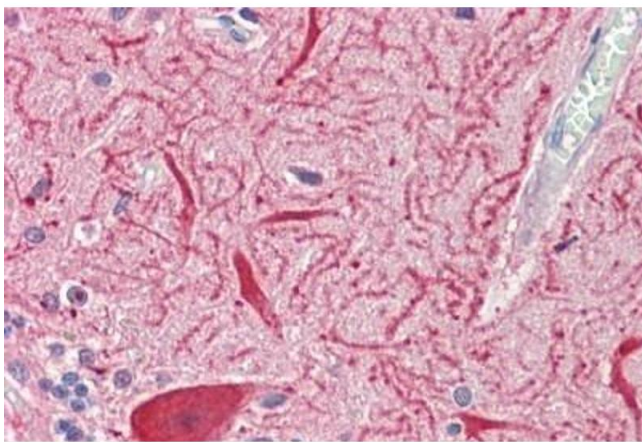
Storage Comment: Maintain refrigerated at 2-8°C for up to 6 months. For long term storage store at -20°C.

Expiry Date: 6 months



Immunohistochemistry

Image 1. Anti-SLC2A13 / HMIT / GLUT13 antibody IHC staining of human brain, cerebellum. Immunohistochemistry of formalin-fixed, paraffin-embedded tissue after heat-induced antigen retrieval. Antibody dilution 1:100.



Immunohistochemistry

Image 2. Human Brain, Cerebellum: Formalin-Fixed, Paraffin-Embedded (FFPE)