

Datasheet for ABIN1804832
anti-SCNN1B antibody (AA 306-332)



[Go to Product page](#)

1 Image

Overview

Quantity:	200 µL
Target:	SCNN1B
Binding Specificity:	AA 306-332
Reactivity:	Human
Host:	Rabbit
Clonality:	Polyclonal
Conjugate:	This SCNN1B antibody is un-conjugated
Application:	Western Blotting (WB), Immunohistochemistry (IHC), Immunohistochemistry (Paraffin-embedded Sections) (IHC (p))

Product Details

Brand:	IHC-plus™
Specificity:	This SCNN1B antibody is generated from rabbits immunized with a KLH conjugated synthetic peptide between 306-332 amino acids from the Central region of human SCNN1B.
Purification:	Protein A purified

Target Details

Target:	SCNN1B
Alternative Name:	SCNN1B / ENaC Beta (SCNN1B Products)
Background:	Name/Gene ID: SCNN1B Subfamily: Sodium channel - amiloride-sensitive

Target Details

Family: Ion Channel

Synonyms: SCNN1B, BESC1, Beta-NaCH, Beta ENaC, Beta-ENaC, ENaC beta, ENaCb, HENaC, Liddle syndrome, RENaC, RNENACB, SCNEB, ENaCbeta

Gene ID: 6338

UniProt: [P51168](#)

Application Details

Application Notes: Approved: IHC, IHC-P (1:100), WB (1:1000)

Comment: Target Species of Antibody: Human

Restrictions: For Research Use only

Handling

Format: Liquid

Concentration: Lot specific

Buffer: PBS, 0.09 % sodium azide

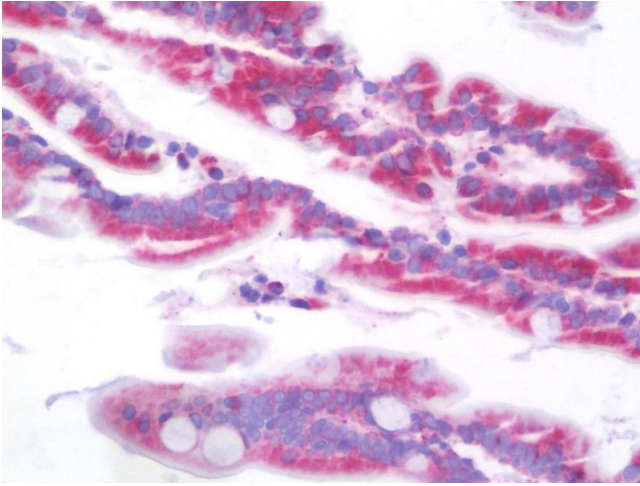
Preservative: Sodium azide

Precaution of Use: This product contains Sodium azide: a POISONOUS AND HAZARDOUS SUBSTANCE which should be handled by trained staff only.

Storage: 4 °C,-20 °C

Storage Comment: Maintain refrigerated at 2-8°C for up to 6 months. For long term storage store at -20°C.

Expiry Date: 6 months



Immunohistochemistry

Image 1. Anti-SCNN1B / ENaC Beta antibody IHC staining of human intestine. Immunohistochemistry of formalin-fixed, paraffin-embedded tissue after heat-induced antigen retrieval. Antibody dilution 1:100.