



Datasheet for ABIN1804835
anti-CERK antibody (AA 487-516)



[Go to Product page](#)

1 Image

Overview

Quantity:	200 µL
Target:	CERK
Binding Specificity:	AA 487-516
Reactivity:	Human, Mouse
Host:	Rabbit
Clonality:	Polyclonal
Conjugate:	This CERK antibody is un-conjugated
Application:	Western Blotting (WB), Immunohistochemistry (IHC), Immunohistochemistry (Paraffin-embedded Sections) (IHC (p))

Product Details

Brand:	IHC-plus™
Specificity:	This CERK antibody is generated from rabbits immunized with a KLH conjugated synthetic peptide between 487-516 amino acids from the C-terminal region of human CERK.
Purification:	Ammonium sulfate precipitation

Target Details

Target:	CERK
Alternative Name:	Ceramide Kinase / CERK (CERK Products)
Background:	Name/Gene ID: CERK Subfamily: Sphingosine

Target Details

Family: Non-protein Kinase

Synonyms: CERK, Acylsphingosine kinase, Ceramide kinase, DA59H18.2, DA59H18.3, KIAA1646, Lipid kinase 4, Lipid kinase LK4, HCERK, LK4

Gene ID: 64781

UniProt: [Q8TCT0](#)

Application Details

Application Notes: Approved: IHC, IHC-P (1:50), WB (1:1000)

Comment: Target Species of Antibody: Human

Restrictions: For Research Use only

Handling

Format: Liquid

Concentration: Lot specific

Buffer: PBS, 0.09 % sodium azide

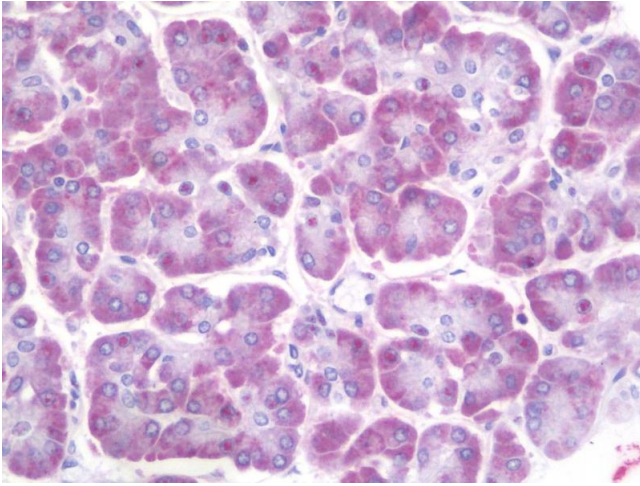
Preservative: Sodium azide

Precaution of Use: This product contains Sodium azide: a POISONOUS AND HAZARDOUS SUBSTANCE which should be handled by trained staff only.

Storage: 4 °C, -20 °C

Storage Comment: Maintain refrigerated at 2-8°C for up to 6 months. For long term storage store at -20°C.

Expiry Date: 6 months



Immunohistochemistry

Image 1. Anti-Ceramide Kinase / CERK antibody IHC staining of human pancreas. Immunohistochemistry of formalin-fixed, paraffin-embedded tissue after heat-induced antigen retrieval. Antibody dilution 1:50.