



[Go to Product page](#)

Datasheet for ABIN180781
anti-CD1b3 antibody (PE)

1 Image

Overview

Quantity:	100 tests
Target:	CD1b3
Reactivity:	Cow
Host:	Mouse
Clonality:	Monoclonal
Conjugate:	This CD1b3 antibody is conjugated to PE
Application:	Flow Cytometry (FACS)

Product Details

Immunogen:	Gene name: CD1w2
Clone:	CC20
Isotype:	IgG2a
Specificity:	This antibody recognises the bovine CD1w2 cell surface antigen, a glycoprotein heterodimer of 12 kDa and 42 kDa.
Purification:	Affinity chromatography on Protein G

Target Details

Target:	CD1b3
Alternative Name:	CD1b3 (CD1b3 Products)
Background:	CD1w2 is expressed by cortical thymocytes and a minority of medullary thymocytes, with a

Target Details

pattern similar to antibodies of the CD1b cluster in humans.

Gene ID: 509004

UniProt: [Q1L1H6](#)

Application Details

Application Notes: Flow Cytometry: Neat - 1/5, use 10 μ L of the suggested working dilution to label 10^6 cells in 100 μ L.
Other applications not tested.
Optimal dilutions are dependent on conditions and should be determined by the user.

Restrictions: For Research Use only

Handling

Reconstitution: Restore with 1 mL distilled water

Buffer: PBS, pH 7.4 containing 0.09 % Sodium Azide and 1 % Bovine Serum Albumin

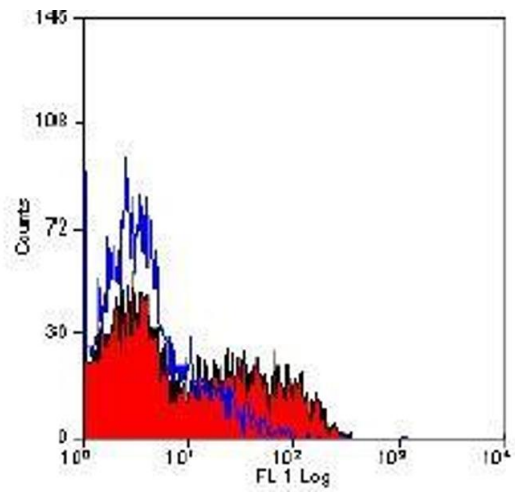
Preservative: Sodium azide

Precaution of Use: This product contains sodium azide: a POISONOUS AND HAZARDOUS SUBSTANCE which should be handled by trained staff only.

Storage: 4 °C

Storage Comment: Prior to and following reconstitution store at +4 °C. DO NOT FREEZE. This product is photosensitive and should be protected from light. Should this product contain a precipitate we recommend microcentrifugation before use.
Shelf life: one year from despatch.

Expiry Date: 12 months



Flow Cytometry

Image 1.