



[Go to Product page](#)

Datasheet for ABIN180856
anti-Podoplanin antibody

1 Image

1 Publication

Overview

Quantity:	100 µg
Target:	Podoplanin (PDPN)
Reactivity:	Human
Host:	Rat
Clonality:	Monoclonal
Conjugate:	This Podoplanin antibody is un-conjugated
Application:	Western Blotting (WB), Flow Cytometry (FACS), Immunoprecipitation (IP), Immunohistochemistry (Paraffin-embedded Sections) (IHC (p)), Immunohistochemistry (Frozen Sections) (IHC (fro))

Product Details

Clone:	NZ-1
Isotype:	IgG2a
Specificity:	The monoclonal antibody will detect Human Podoplanin on the surface of lymphatic endothelial cells and kidney podocytes. Therefore, it will be a useful tool to study lymphatic vessel density in and around Human tumors. Does not react with Mouse.
Characteristics:	Synonyms: Glycoprotein 36, PA2.26 antigen, T1-alpha, Aggrus, PDPN, GP36, PSEC0003, PSEC0025
Purification:	Purified

Target Details

Target:	Podoplanin (PDPN)
Alternative Name:	Podoplanin (PDPN Products)
Background:	Podoplanin is a well-recognized lymphatic endothelium marker, which can be used to reliably distinguish lymphatic vessels from blood vessels. Podoplanin is a Mr 38,000 membrane mucoprotein that was originally detected on the surface of rat glomerular epithelial cells (podocytes) and was found to be linked to flattening of foot processes that occurs in glomerular diseases. Podoplanin shows features of a membrane mucoprotein with several conserved O-glycosylation sites. Currently, it is of unknown biological function. Because heavily O-glycosylated mucoproteins were identified recently as counterreceptors for selectins that mediate adhesion of inflammatory cells, it is possible that podoplanin plays a similar role in lymphatic endothelia. Synonyms: Aggrus, GP36, Glycoprotein 36, PA2.26 antigen, PDPN, PSEC0003, PSEC0025, T1-alpha
Gene ID:	10630
UniProt:	Q86YL7
Pathways:	Dicarboxylic Acid Transport

Application Details

Application Notes:	FACS (1/200). Western blot ($\geq 1/200$). Immunoprecipitation: 1/50. Immunostaining/Immunohistochemistry on Frozen and Paraffin Sections (1/200). Suitable for Formalin-Fixed Paraffin Embedded Sections. Other applications not tested. Optimal dilutions are dependent on conditions and should be determined by the user.
Restrictions:	For Research Use only

Handling

Format:	Liquid
Concentration:	0.5 mg/mL
Buffer:	PBS, 0.09 % Sodium Azide
Preservative:	Sodium azide
Precaution of Use:	This product contains sodium azide: a POISONOUS AND HAZARDOUS SUBSTANCE which should be handled by trained staff only.

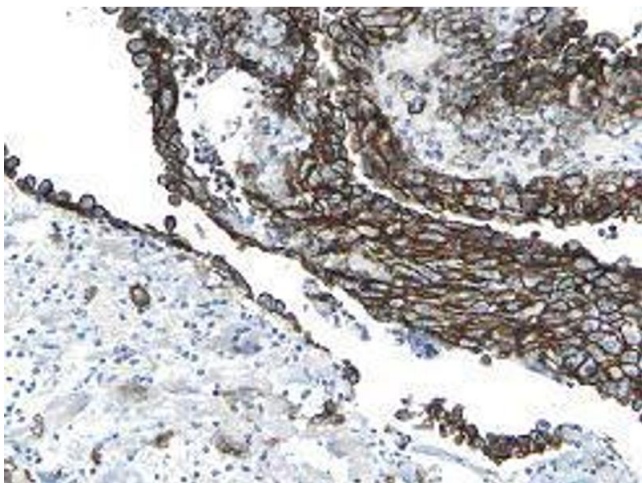
Handling

Storage:	4 °C/-20 °C
Storage Comment:	Store the antibody undiluted at 2-8 °C for one month or (in working aliquots) at -20 °C for longer. Avoid repeated freezing and thawing. Shelf life: one year from despatch.
Expiry Date:	12 months

Publications

Product cited in:	Ohta, Taguchi, Matsumura, Nakabayashi, Akiyama, Yamamoto, Fujimoto, Suetomi, Yanai, Shinoda, Tanizawa: "Clock Gene Dysregulation Induced by Chronic ER Stress Disrupts β -cell Function." in: EBioMedicine , Vol. 18, pp. 146-156, (2017) (PubMed).
	Hamamura, Matsunaga, Ikeda, Kondo, Ikeyama, Tokushige, Itcho, Furuichi, Yoshida, Matsuda, Yasuda, Doi, Yokota, Amamoto, Aramaki, Irino, Koyanagi, Ohdo: "Alterations of Hepatic Metabolism in Chronic Kidney Disease via D-box-binding Protein Aggravate the Renal Dysfunction." in: The Journal of biological chemistry , Vol. 291, Issue 10, pp. 4913-27, (2016) (PubMed).

Images



Immunohistochemistry

Image 1.