



[Go to Product page](#)

Datasheet for ABIN1811406  
**anti-MLF1 antibody (AA 215-244)**

1 Image

### Overview

Quantity:	400 µL
Target:	MLF1
Binding Specificity:	AA 215-244
Reactivity:	Human, Mouse
Host:	Rabbit
Clonality:	Polyclonal
Conjugate:	This MLF1 antibody is un-conjugated
Application:	Western Blotting (WB), Immunohistochemistry (IHC), Flow Cytometry (FACS), Immunohistochemistry (Paraffin-embedded Sections) (IHC (p))

### Product Details

Specificity:	This MLF1 antibody is generated from rabbits immunized with a KLH conjugated synthetic peptide between 215-244 amino acids from the C-terminal region of human MLF1.
Purification:	Protein A purified

### Target Details

Target:	MLF1
Alternative Name:	MLF1 ( <a href="#">MLF1 Products</a> )
Background:	Name/Gene ID: MLF1  Synonyms: MLF1, Myeloid leukemia factor 1

## Target Details

Gene ID: 4291

UniProt: [P58340](#)

## Application Details

Application Notes: Approved: Flo (1:10 - 1:50), IHC, IHC-P (1:10 - 1:100), WB (1:1000)

Comment: Target Species of Antibody: Human

Restrictions: For Research Use only

## Handling

Format: Liquid

Concentration: Lot specific

Buffer: PBS, 0.09 % sodium azide

Preservative: Sodium azide

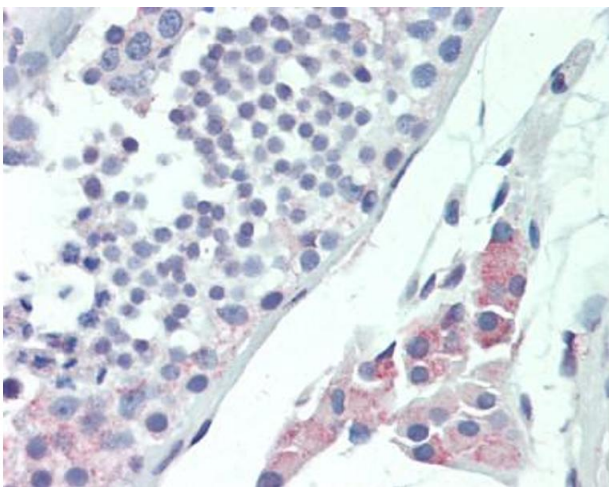
Precaution of Use: This product contains Sodium azide: a POISONOUS AND HAZARDOUS SUBSTANCE which should be handled by trained staff only.

Storage: 4 °C, -20 °C

Storage Comment: Maintain refrigerated at 2-8°C for up to 6 months. For long term storage store at -20°C.

Expiry Date: 6 months

## Images



### Immunohistochemistry (Paraffin-embedded Sections)

**Image 1.** Human Testis: Formalin-Fixed, Paraffin-Embedded (FFPE), at a dilution of 1:100.