



Datasheet for ABIN1812380  
**anti-KLRC1 antibody (AA 1-30)**



[Go to Product page](#)

1 Image

Overview

Quantity:	400 µL
Target:	KLRC1
Binding Specificity:	AA 1-30
Reactivity:	Human
Host:	Rabbit
Clonality:	Polyclonal
Conjugate:	This KLRC1 antibody is un-conjugated
Application:	Western Blotting (WB), Immunohistochemistry (IHC), Immunofluorescence (IF), Immunohistochemistry (Paraffin-embedded Sections) (IHC (p))

Product Details

Specificity:	This KLRC1 antibody is generated from rabbits immunized with a KLH conjugated synthetic peptide between 1-30 amino acids from the N-terminal region of human KLRC1.
Purification:	Protein A purified

Target Details

Target:	KLRC1
Alternative Name:	NKG2A ( <a href="#">KLRC1 Products</a> )
Background:	Name/Gene ID: KLRC1  Synonyms: KLRC1, CD159a antigen, NK cell receptor A, Natural killer cell lectin, NKG2, NKG2-A,

## Target Details

NKG2A, C-lectin type II protein, CD159A, Natural killer group protein 2, NKG2-B

Gene ID: 3821

UniProt: [P26715](#)

## Application Details

Application Notes: Approved: IF (1:10 - 1:50), IHC, IHC-P (1:100), WB (1:1000)

Comment: Target Species of Antibody: Human

Restrictions: For Research Use only

## Handling

Format: Liquid

Concentration: Lot specific

Buffer: PBS, 0.09 % sodium azide

Preservative: Sodium azide

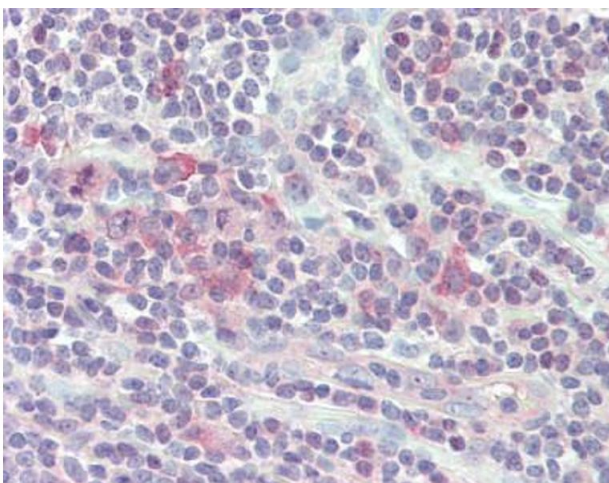
Precaution of Use: This product contains Sodium azide: a POISONOUS AND HAZARDOUS SUBSTANCE which should be handled by trained staff only.

Storage: 4 °C, -20 °C

Storage Comment: Maintain refrigerated at 2-8°C for up to 6 months. For long term storage store at -20°C.

Expiry Date: 6 months

## Images



### Immunohistochemistry (Paraffin-embedded Sections)

**Image 1.** Human Small Intestine, MALT: Formalin-Fixed, Paraffin-Embedded (FFPE)