

Datasheet for ABIN181444

anti-GPRC5B antibody (C-Term)[Go to Product page](#)**1** Image

Overview

Quantity:	50 µg
Target:	GPRC5B
Binding Specificity:	C-Term
Reactivity:	Human, Mouse, Rat
Host:	Rabbit
Clonality:	Polyclonal
Conjugate:	This GPRC5B antibody is un-conjugated
Application:	Immunohistochemistry (Paraffin-embedded Sections) (IHC (p))

Product Details

Immunogen:	GPRC5B antibody was raised against synthetic peptide from C-terminal domain of human GPRC5B.
Specificity:	This antibody reacts to the C-terminal domain of G Protein-Coupled Receptor GPRC5B (RAIG2).
Cross-Reactivity (Details):	Species reactivity (expected):Mouse, RatSpecies reactivity (tested):Human
Purification:	Immunoaffinity Chromatography

Target Details

Target:	GPRC5B
Alternative Name:	GPRC5B / RAIG2 (GPRC5B Products)
Background:	GPRC5B is a member of the type 3 G protein-coupled receptor family. Members of this

Target Details

	superfamily are characterized by a signature 7-transmembrane domain motif. The specific function of this protein is unknown, however, this protein may mediate the cellular effects of retinoic acid on the G protein signal transduction cascade.Synonyms: A-69G12.1, G-protein coupled receptor family C group 5 member B, Retinoic acid-induced gene 2 protein
Gene ID:	51704
NCBI Accession:	NP_057319
UniProt:	Q9NZH0

Application Details

Application Notes:	Immunohistochemistry nof paraffin sections: 20 µg/mL. Other applications not tested. Optimal dilutions are dependent on conditions and should be determined by the user.
Restrictions:	For Research Use only

Handling

Concentration:	1,0 mg/mL
Buffer:	PBS containing 0.09 % sodium azide as preservative
Preservative:	Sodium azide
Precaution of Use:	This product contains sodium azide: a POISONOUS AND HAZARDOUS SUBSTANCE which should be handled by trained staff only.
Handling Advice:	Avoid repeated freezing and thawing.
Storage:	4 °C/-20 °C
Storage Comment:	Store the antibody undiluted at 2-8 °C for one month or (in aliquots) at -20 °C to -70 °C for longer.

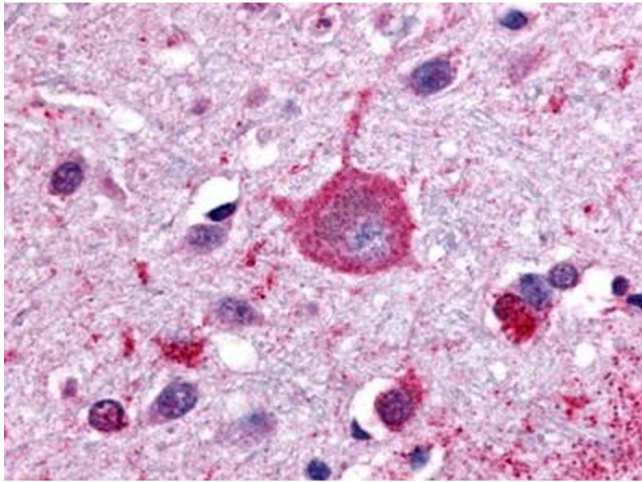


Image 1.