

Datasheet for ABIN181640 **anti-PLGF antibody**

2 Images



[Go to Product page](#)

Overview

Quantity:	50 µg
Target:	PLGF (PGF)
Reactivity:	Human
Host:	Rabbit
Clonality:	Polyclonal
Conjugate:	This PLGF antibody is un-conjugated
Application:	Western Blotting (WB), Enzyme Immunoassay (EIA)

Product Details

Immunogen:	Highly pure (> 98%) E.coli derived from recombinant Human PIGF
Specificity:	This antibody detects Human PIGF. Other species not tested.
Purification:	Immunoaffinity Chromatography employing immobilized Human PIGF matrix

Target Details

Target:	PLGF (PGF)
Alternative Name:	Placenta Growth Factor / PGF (PGF Products)
Background:	PLGF is a growth factor active in angiogenesis, and endothelial cell growth, stimulating their proliferation and migration. It belongs to the cysteine-knot superfamily. PLGF is expressed in placental tissues, colon and mammary carcinomas. It signals through the VEGFR-1/FLT1 receptor. Synonyms: PGFL, PLGF, PIGF
Gene ID:	5228

Target Details

NCBI Accession:	NP_001193941
UniProt:	P49763
Pathways:	VEGFR1 Specific Signals

Application Details

Application Notes:	<p>ELISA: Indirect: To detect hPIGF (using 100 µL/well antibody solution) a concentration of 0.5 - 2.0 µg/mL of this antibody is required. In conjunction with compatible secondary reagents, it allows the detection of at least 0.2 - 0.4 ng/well of recombinant hPIGF. Sandwich: To detect hPIGF (using 100 µL/well antibody solution) a concentration of 0.5 - 2.0 µg/mL of this antibody is required. In conjunction with Biotinylated Anti-HumanPIGF as a detection antibody, it allows the detection of at least 0.2 - 0.4 ng/well of recombinant hPIGF. Western blot: To detect hPIGF this antibody can be used at a concentration of 0.1 - 0.2 g/mL. Used in conjunction with compatible secondary reagents the detection limit for recombinant hPIGF is 1.5 - 3.0 ng/lane, under either reducing or non-reducing conditions.</p> <p>Other applications not tested.</p> <p>Optimal dilutions are dependent on conditions and should be determined by the user.</p>
--------------------	---

Restrictions:	For Research Use only
---------------	-----------------------

Handling

Reconstitution:	Centrifuge vial prior to opening. Restore in sterile water to a concentration of 0.1 - 1.0 mg/mL.
Buffer:	PBS, pH 7.2
Handling Advice:	Avoid repeated freezing and thawing.
Storage:	-20 °C
Storage Comment:	Store the lyophilized antibody at -20 °C. Following reconstitution it is stable for two weeks at 2 - 8 °C. Frozen aliquots are stable for 6 months when stored at -20 °C.
Expiry Date:	6 months

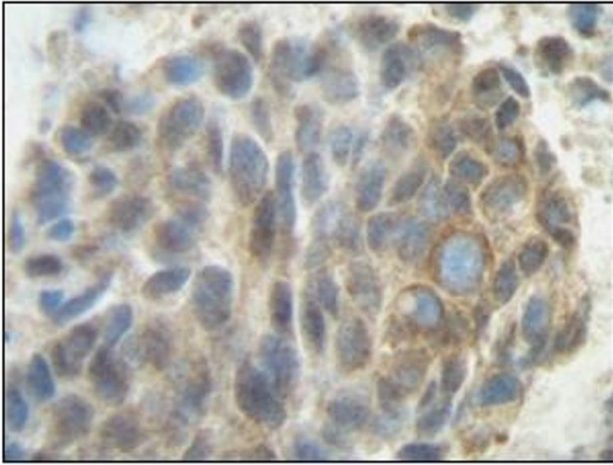


Image 1.

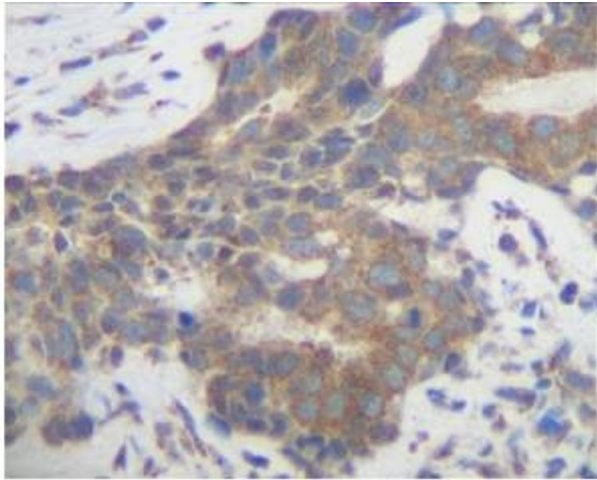


Image 2.