

Datasheet for ABIN181656  
**anti-IGFBP5 antibody**



[Go to Product page](#)

4 Images

## Overview

Quantity:	50 µg
Target:	IGFBP5
Reactivity:	Human
Host:	Rabbit
Clonality:	Polyclonal
Conjugate:	This IGFBP5 antibody is un-conjugated
Application:	Western Blotting (WB), Enzyme Immunoassay (EIA)

## Product Details

Immunogen:	Highly pure (> 98 %) recombinant human IGF-BP5
Specificity:	This antibody detects Insulin-like Growth Factor Binding Protein 5.
Purification:	Immunoaffinity Chromatography

## Target Details

Target:	IGFBP5
Alternative Name:	IGFBP5 ( <a href="#">IGFBP5 Products</a> )
Background:	IGFBP5 is one of a family of proteins that bind to insulin-like growth factors (IGFs). IGFBP5 is a multifunctional protein which acts not only as a traditional binding protein but also functions as a growth factor independent of IGFs to stimulate bone formation. Currently there are seven named IGF-BPs that form high affinity complexes with both IGFI and IGFI. IGFBP5 is the major IGF-binding protein present in bone tissue and helps potentiate the action of IGFI on smooth

## Target Details

muscle cells, fibroblasts or osteoblasts. Data shows that IGFBP5 acts as a growth inhibitor and pro-apoptotic agent in breast cancer cells. IGFBP5 overexpressing mice show an increase in neonatal mortality, reduced female fertility, whole-body growth inhibition and retarded muscle development. Synonyms: IBP-5, IBP5, IGF-binding protein 5, IGFBP-5, Insulin-like growth factor-binding protein 5

Gene ID:	3488
NCBI Accession:	<a href="#">NP_000590</a>
UniProt:	<a href="#">P24593</a>
Pathways:	<a href="#">WNT Signaling</a> , <a href="#">Carbohydrate Homeostasis</a> , <a href="#">Myometrial Relaxation and Contraction</a> , <a href="#">Regulation of Carbohydrate Metabolic Process</a> , <a href="#">Autophagy</a> , <a href="#">Smooth Muscle Cell Migration</a> , <a href="#">Growth Factor Binding</a>

## Application Details

Application Notes:	<p>Indirect ELISA: To detect hIGF-BP5 (using 100 µL/well antibody solution) a concentration of 0.5-2.0 µg/mL of this antibody is required. In conjunction with compatible secondary reagents, it allows the detection of at least 0.2-0.4 ng/well of recombinant hIGF-BP5. Sandwich ELISA: To detect hIGF-BP5 (using 100 µL/well antibody solution) a concentration of 0.5-2.0 µg/mL of this antibody is required. In conjunction with Biotinylated Anti-Human IGF-BP5 (ABIN181653 or ABIN181654) as a detection antibody, it allows the detection of at least 0.2-0.4 ng/well of recombinant hIGF-BP5. Western blot: To detect hIGF-BP5 this antibody can be used at a concentration of 0.1-0.2 µg/mL. Used in conjunction with compatible secondary reagents the detection limit for recombinant hIGF-BP5 is 1.5-3.0 ng/lane, under either reducing or non-reducing conditions.</p> <p>Other applications not tested.</p> <p>Optimal dilutions are dependent on conditions and should be determined by the user.</p>
--------------------	--

Restrictions:	For Research Use only
---------------	-----------------------

## Handling

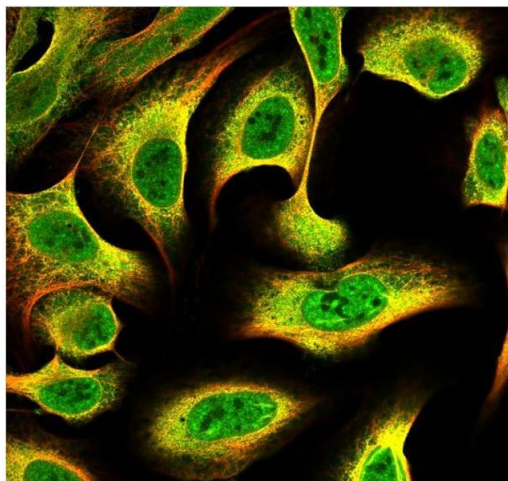
Reconstitution:	Centrifuge vial prior to opening. Restore in sterile water to a concentration of 0.1-1.0 mg/mL.
Buffer:	PBS, pH 7.2
Handling Advice:	Avoid repeated freezing and thawing.
Storage:	-20 °C

## Handling

**Storage Comment:** Store the lyophilized antibody at -20 °C. Following reconstitution it is stable for two weeks at 2-8 °C. Frozen aliquots are stable for 6 months when stored at -20 °C.

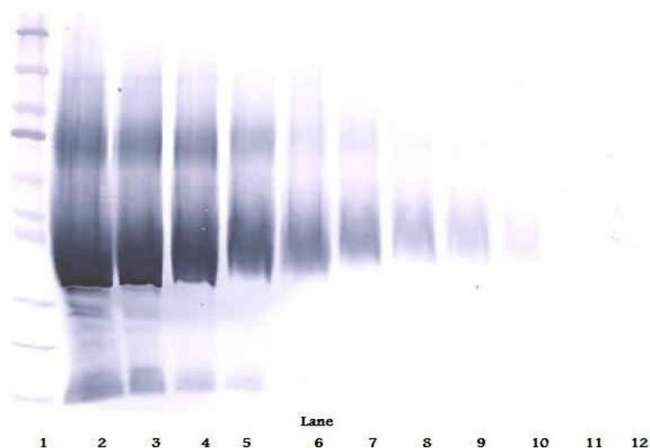
**Expiry Date:** 6 months

## Images



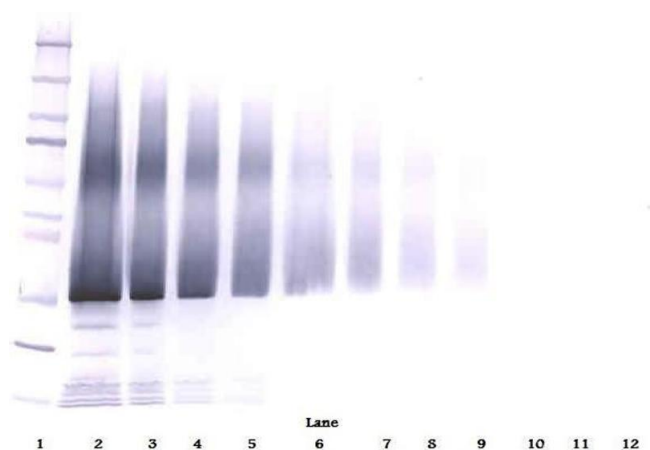
### Immunofluorescence

**Image 1.** This antibody stained U-2 OS and U-251 MG cells. The primary antibody was incubated at 2.0 mg/ml overnight at 4°C followed by a fluorescent labeled secondary antibody. Optimal concentrations and conditions may vary. *Information and photo are courtesy of the Cell Profiling group, SciLifeLab Stockholm.*



### Western Blotting

**Image 2.** Western Blot (Reduced) using IGFBP5 Antibody Cat.-No AP01139PU



### Western Blotting

**Image 3.** Western Blot (Unreduced) using IGFBP5 Antibody Cat.-No AP01139PU

Please check the [product details page](#) for more images. Overall 4 images are available for ABIN181656.