

Datasheet for ABIN1819417
anti-CCR6 antibody (AA 18-46)[Go to Product page](#)

1 Image

Overview

Quantity:	0.1 mg
Target:	CCR6
Binding Specificity:	AA 18-46
Reactivity:	Human, Mouse
Host:	Goat
Clonality:	Polyclonal
Conjugate:	This CCR6 antibody is un-conjugated
Application:	ELISA, Western Blotting (WB), Immunohistochemistry (IHC), Immunohistochemistry (Paraffin-embedded Sections) (IHC (p))

Product Details

Immunogen:	Synthetic peptide YFVSVNTSYYSVDSEMLLCSLQEVQRFSR corresponding to amino acids 18-46 of human CD196. Percent identity by BLAST analysis: Human, Gorilla, Orangutan, Gibbon (100%), Chimpanzee (97%), Monkey (86%). Type of Immunogen: Synthetic peptide
Isotype:	IgG
Specificity:	Recognizes human CD196, otherwise known as CCR6 (C-C chemokine receptor type 6), a transmembrane glycoprotein and member of the G-protein coupled receptor 1 family, which acts as a specific receptor for the C-C chemokine LARC (Liver and activation-regulated chemokine)/MIP-3alpha, a selective chemoattractant which induces calcium flux in CD196-expressing lymphocytes. CD196 is preferentially expressed by B cells, memory T cells and

Product Details

immature dendritic cells and plays an important role in B lineage maturation and antigen-driven B cell differentiation. CD196 acts as a co-receptor for HIV1 infection, and is selectively expressed by mucosa-associated non-Hodgkin's lymphoma, making the interaction between CD196 and LARC a potential therapeutic target in these malignancies. Cross-reacts with mouse CD196, where linear epitopes are accessible.

Purification: Affinity purified

Target Details

Target: CCR6

Alternative Name: CCR6 ([CCR6 Products](#))

Background: Name/Gene ID: CCR6
Subfamily: Chemokine
Family: GPCR

Synonyms: CCR6, C-c chemokine receptor 6, CD196 antigen, BN-1, C-C chemokine receptor type 6, C-C CKR-6, Chemokine c-c motif receptor 6, CKRL3, CMKBR6, Chemokine (C-C) receptor 6, Chemokine receptor-like 3, Cc chemokine receptor 6, CC-CKR-6, CCR-6, DCR2, DRY6, G protein-coupled receptor 29, DRY-6, G-protein coupled receptor 29, GPR29, GPRCY4, Strl-22, STRL22, CD196, CKR-L3, GPR-CY4, LARC receptor

Gene ID: 1235

UniProt: [P51684](#)

Pathways: [cAMP Metabolic Process](#)

Application Details

Application Notes: Approved: ELISA (1:35000), IHC, IHC-P (5 µg/mL), WB (1:250)

Comment: Target Species of Antibody: Human

Restrictions: For Research Use only

Handling

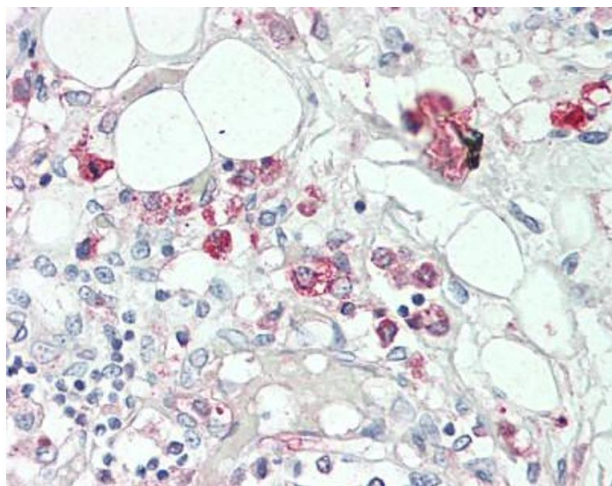
Format: Liquid

Concentration: Lot specific

Handling

Buffer:	PBS, 0.1 % sodium azide, 0.1 % BSA
Preservative:	Sodium azide
Precaution of Use:	This product contains Sodium azide: a POISONOUS AND HAZARDOUS SUBSTANCE which should be handled by trained staff only.
Handling Advice:	Avoid repeated freezing and thawing.
Storage:	4 °C, -20 °C
Storage Comment:	4°C or -20°C, Avoid freeze-thaw cycles.

Images



Immunohistochemistry (Paraffin-embedded Sections)

Image 1. Human Thymus: Formalin-Fixed, Paraffin-Embedded (FFPE), at a concentration of 5 ug/ml.