



[Go to Product page](#)

Datasheet for ABIN1828403
anti-MT3 antibody (AA 1-68)

1 Image

Overview

Quantity:	200 µL
Target:	MT3
Binding Specificity:	AA 1-68
Reactivity:	Human
Host:	Mouse
Clonality:	Monoclonal
Conjugate:	This MT3 antibody is un-conjugated
Application:	ELISA, Immunohistochemistry (IHC), Western Blotting (WB), Immunohistochemistry (Paraffin-embedded Sections) (IHC (p))

Product Details

Immunogen:	MT3 (AAH13081, aa1-68 full-length recombinant protein with GST tag. MW of the GST tag alone is 26 KDa. Type of Immunogen: GST fusion protein
Clone:	3E8
Isotype:	IgM kappa
Specificity:	Human MT3 / Metallothionein
Purification:	Purified from ascites.

Target Details

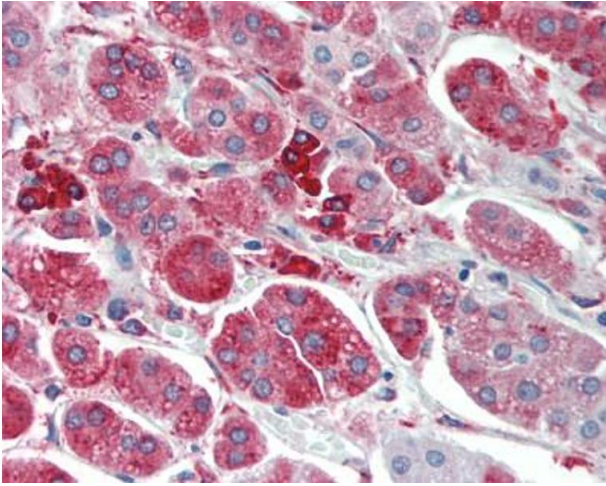
Target:	MT3
Alternative Name:	MT3 / Metallothionein 3 (MT3 Products)
Background:	Name/Gene ID: MT3 Synonyms: MT3, GIFB, Metallothionein 3, Growth inhibitory factor, MT-3, MT-III, Metallothionein-3, Metallothionein-III, GRIF, ZnMT3
Gene ID:	4504
UniProt:	P25713
Pathways:	Hormone Transport , Transition Metal Ion Homeostasis , Regulation of Cell Size , Regulation of Carbohydrate Metabolic Process , Protein targeting to Nucleus

Application Details

Application Notes:	Approved: ELISA, IHC, IHC-P (1:50), WB Usage: Western Blot: Recombinant protein.
Comment:	Target Species of Antibody: Human
Restrictions:	For Research Use only

Handling

Format:	Liquid
Concentration:	Lot specific
Buffer:	Ascites fluid
Handling Advice:	Aliquot to avoid repeated freezing and thawing.
Storage:	-20 °C
Storage Comment:	Store at -20°C or lower. Aliquot to avoid freeze-thaw cycles.



Immunohistochemistry (Paraffin-embedded Sections)

Image 1. Human Adrenal: Formalin-Fixed, Paraffin-Embedded (FFPE)