



[Go to Product page](#)

Datasheet for ABIN1842244
anti-ALDOC antibody (N-Term)

2 Images

Overview

Quantity:	100 µL
Target:	ALDOC
Binding Specificity:	N-Term
Reactivity:	Human, Rat, Cow, Pig, Chicken
Host:	Mouse
Clonality:	Monoclonal
Conjugate:	This ALDOC antibody is un-conjugated
Application:	Western Blotting (WB), Immunohistochemistry (IHC), Immunofluorescence (IF), Immunocytochemistry (ICC)

Product Details

Clone:	4A9
Isotype:	IgG1

Target Details

Target:	ALDOC
Alternative Name:	Aldolase C (ALDOC Products)

Application Details

Restrictions:	For Research Use only
---------------	-----------------------

Format: Liquid

Images

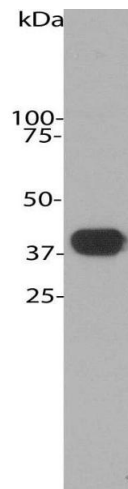
**Western Blotting**

Image 1. Blots of crude cow cerebellum homogenate blotted with ABIN1842244. The ABIN1842244 monoclonal binds strongly and cleanly to a band at about 40 kDa.

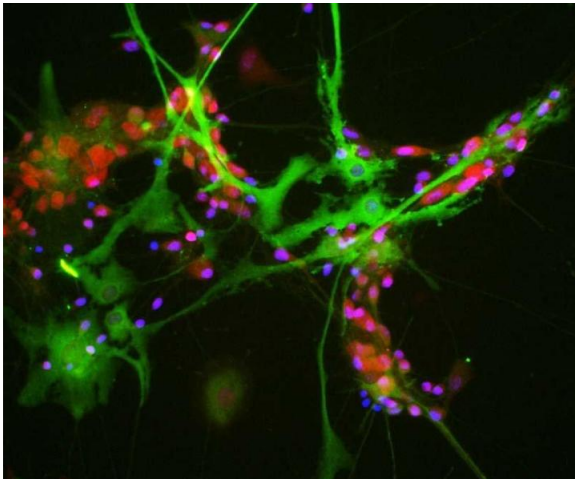
**Immunofluorescence**

Image 2. View of mixed neuron/glia cultures stained with ABIN1842244 (green) and our rabbit antibody to NeuN/FOX3 antibody (RPCA-FOX3, red). ABIN1842244 antibody reveals strong cytoplasmic staining in astrocytes, while Rabbit Fox3/NeuN antibody shows nuclear and distal cytoplasmic staining in neuron cells and is complete absence of astrocytes. Blue is a DNA stain.