

Datasheet for ABIN1842825

anti-Annexin a1 antibody (AA 144-248)

5 Images



[Go to Product page](#)

Overview

Quantity:	100 µL
Target:	Annexin a1 (ANXA1)
Binding Specificity:	AA 144-248
Reactivity:	Human, Mouse, Monkey
Host:	Mouse
Clonality:	Monoclonal
Conjugate:	This Annexin a1 antibody is un-conjugated
Application:	Western Blotting (WB), ELISA, Immunohistochemistry (IHC)

Product Details

Immunogen:	Purified recombinant fragment of human ANXA1 (AA: 144-248) expressed in E. Coli.
Isotype:	IgG1
Purification:	Purified

Target Details

Target:	Annexin a1 (ANXA1)
Alternative Name:	ANXA1 (ANXA1 Products)
Background:	Annexin I belongs to a family of Ca (2+)-dependent phospholipid binding proteins which have a molecular weight of approximately 35,000 to 40,000 and are preferentially located on the cytosolic face of the plasma membrane. Annexin I protein has an apparent relative molecular mass of 40 kDa, with phospholipase A2 inhibitory activity.

Target Details

Molecular Weight:	38.7 kDa
Pathways:	Hormone Transport

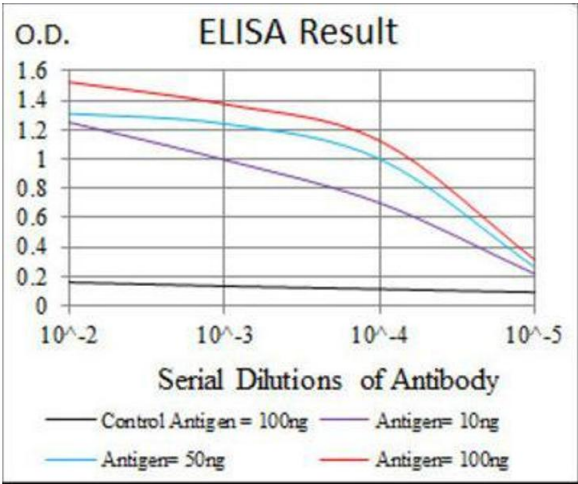
Application Details

Restrictions:	For Research Use only
---------------	-----------------------

Handling

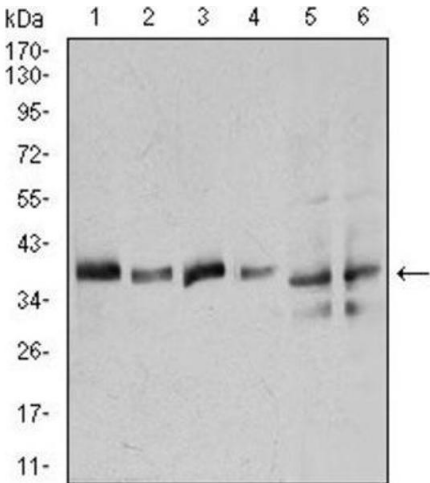
Buffer:	Purified antibody in PBS with 0.05% sodium azide and 0.5% protein stabilizer.
Preservative:	Sodium azide
Precaution of Use:	This product contains sodium azide: a POISONOUS AND HAZARDOUS SUBSTANCE which should be handled by trained staff only.
Storage:	-20 °C
Storage Comment:	Aliquot and store at -20 °C.

Images



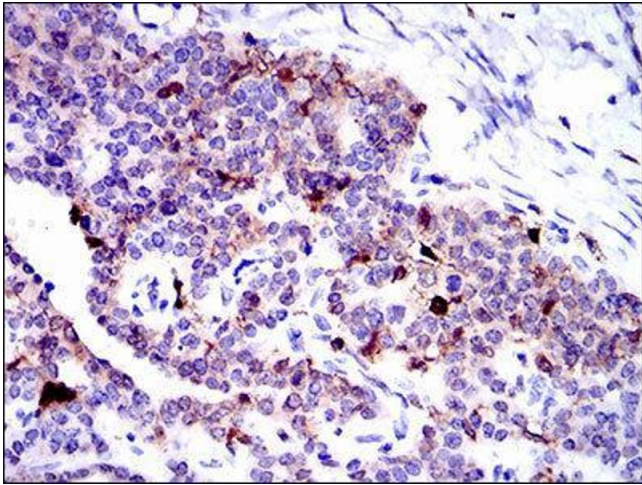
ELISA

Image 1.



Western Blotting

Image 2.



Immunohistochemistry

Image 3.

Please check the [product details page](#) for more images. Overall 5 images are available for ABIN1842825.