

Datasheet for ABIN1844030
anti-Doublecortin antibody (AA 362-411)

8 Images

[Go to Product page](#)

Overview

Quantity:	100 µL
Target:	Doublecortin (DCX)
Binding Specificity:	AA 362-411
Reactivity:	Human
Host:	Mouse
Clonality:	Monoclonal
Conjugate:	This Doublecortin antibody is un-conjugated
Application:	Western Blotting (WB), ELISA, Immunohistochemistry (IHC), Flow Cytometry (FACS), Immunofluorescence (fixed cells) (IF/ICC)

Product Details

Immunogen:	Purified recombinant fragment of human DCX (AA: 362-411) expressed in E. Coli.
Isotype:	IgG1
Purification:	Purified antibody

Target Details

Target:	Doublecortin (DCX)
Alternative Name:	DCX (DCX Products)
Background:	In the developing cortex, cortical neurons must migrate over long distances to reach the site of their final differentiation. The protein encoded by this gene is a cytoplasmic protein which appears to direct neuronal migration by regulating the organization and stability of

Target Details

microtubules. The encoded protein contains two doublecortin domains, which bind microtubules. In addition, the encoded protein interacts with LIS1, the regulatory gamma subunit of platelet activating factor acetylhydrolase, and this interaction is important to proper microtubule function in the developing cortex. Mutations in this gene are a cause of X-linked lissencephaly. Multiple transcript variants encoding at least three different isoforms have been found for this gene.

Molecular Weight: 49.3 kDa

Gene ID: 1641

UniProt: [O43602](#)

Application Details

Application Notes: Optimal working dilution should be determined by the investigator.

Restrictions: For Research Use only

Handling

Format: Liquid

Concentration: 1.0 mg/mL

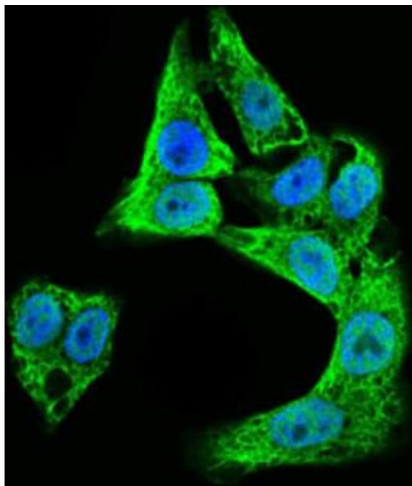
Buffer: PBS with 0.05 % sodium azide and 0.5 % protein stabilizer.

Preservative: Sodium azide

Precaution of Use: This product contains Sodium azide: a POISONOUS AND HAZARDOUS SUBSTANCE which should be handled by trained staff only.

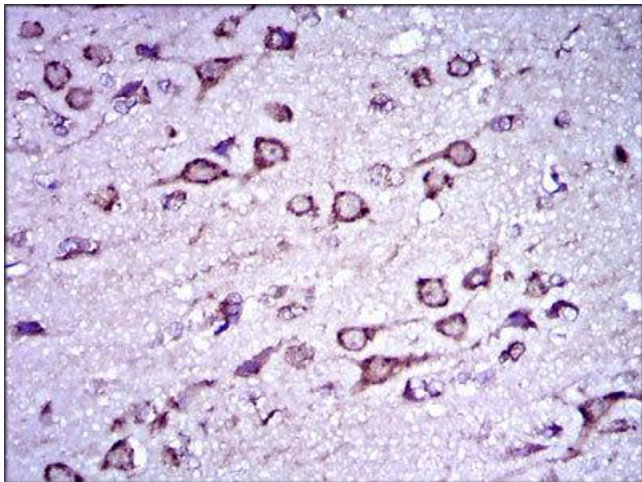
Storage: -20 °C

Storage Comment: Aliquot and store at -20 °C. Avoid repeated freeze/thaw cycles.



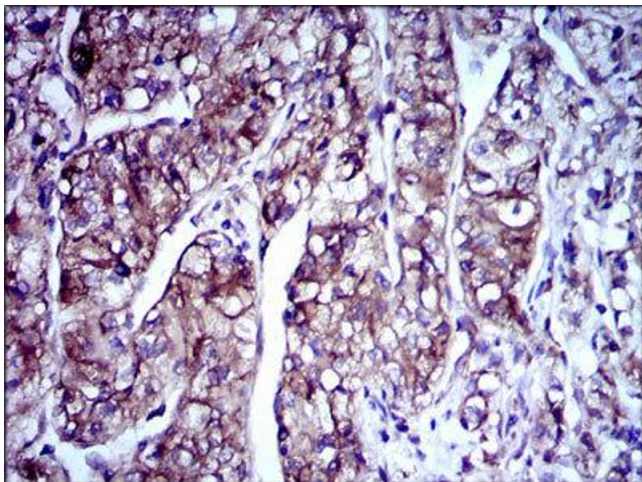
Immunofluorescence

Image 1. Immunofluorescence analysis of HepG2 cells using DCX antibody (green). Blue: DRAQ5 fluorescent DNA dye.



Immunohistochemistry

Image 2.



Immunohistochemistry

Image 3.

Please check the [product details page](#) for more images. Overall 8 images are available for ABIN1844030.