

Datasheet for ABIN1844101

anti-Integrin Alpha2b antibody (AA 45-149)

9 Images

[Go to Product page](#)

Overview

Quantity:	100 µL
Target:	Integrin Alpha2b (CD41)
Binding Specificity:	AA 45-149
Reactivity:	Human
Host:	Mouse
Clonality:	Monoclonal
Conjugate:	This Integrin Alpha2b antibody is un-conjugated
Application:	Flow Cytometry (FACS), Western Blotting (WB), ELISA, Immunohistochemistry (IHC)

Product Details

Immunogen:	Purified recombinant fragment of human ITGA2B (AA: 45-149) expressed in E. coli.
Isotype:	IgG1
Purification:	Purified antibody

Target Details

Target:	Integrin Alpha2b (CD41)
Alternative Name:	ITGA2B (CD41 Products)
Background:	ITGA2B encodes integrin alpha chain 2b. Integrins are heterodimeric integral membrane proteins composed of an alpha chain and a beta chain. Alpha chain 2b undergoes post-translational cleavage to yield disulfide-linked light and heavy chains that join with beta 3 to form a fibronectin receptor expressed in platelets that plays a crucial role in

Target Details

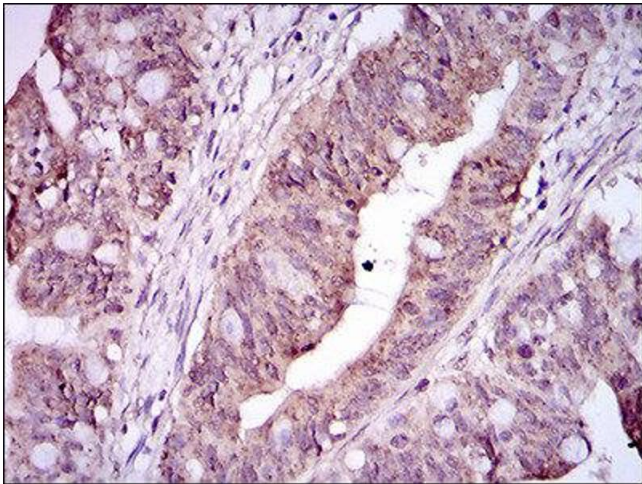
	coagulation. Mutations that interfere with this role result in thrombasthenia. In addition to adhesion, integrins are known to participate in cell-surface mediated signalling.
Molecular Weight:	113.4 kDa
Gene ID:	3674
UniProt:	P08514
Pathways:	Integrin Complex

Application Details

Application Notes:	Optimal working dilution should be determined by the investigator.
Restrictions:	For Research Use only

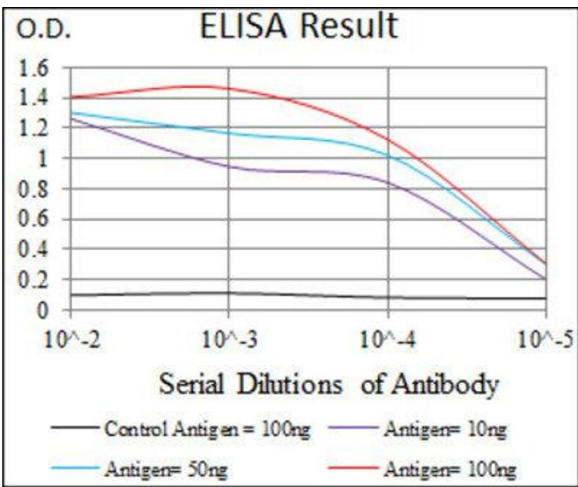
Handling

Format:	Liquid
Concentration:	1.0 mg/mL
Buffer:	PBS with 0.05 % sodium azide and 0.5 % protein stabilizer.
Preservative:	Sodium azide
Precaution of Use:	This product contains Sodium azide: a POISONOUS AND HAZARDOUS SUBSTANCE which should be handled by trained staff only.
Storage:	-20 °C
Storage Comment:	Aliquot and store at -20 °C. Avoid repeated freeze/thaw cycles.



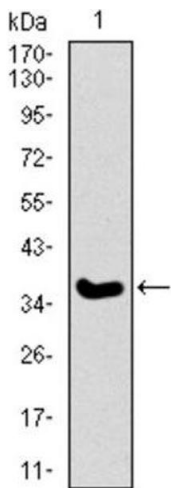
Immunohistochemistry

Image 1.



ELISA

Image 2.



Western Blotting

Image 3.

Please check the [product details page](#) for more images. Overall 9 images are available for ABIN1844101.