

Datasheet for ABIN1845258
anti-NAPSA antibody (AA 20-158)



[Go to Product page](#)

7 Images

Overview

| | |
|----------------------|--|
| Quantity: | 100 µL |
| Target: | NAPSA |
| Binding Specificity: | AA 20-158 |
| Reactivity: | Human, Rat |
| Host: | Mouse |
| Clonality: | Monoclonal |
| Conjugate: | This NAPSA antibody is un-conjugated |
| Application: | Western Blotting (WB), ELISA, Immunohistochemistry (IHC) |

Product Details

| | |
|---------------|---|
| Immunogen: | Purified recombinant fragment of human NAPSA (AA: 20-158) expressed in E. coli. |
| Isotype: | IgG1 |
| Purification: | Purified antibody |

Target Details

| | |
|-------------------|---|
| Target: | NAPSA |
| Alternative Name: | NAPSA (NAPSA Products) |
| Background: | The activation peptides of aspartic proteinases plays role as inhibitors of the active site. These peptide segments, or pro-parts, are deemed important for correct folding, targeting, and control of the activation of aspartic proteinase zymogens. The pronapsin A gene is expressed predominantly in lung and kidney. Its translation product is predicted to be a fully functional, |

Target Details

glycosylated aspartic proteinase precursor containing an RGD motif and an additional 18 residues at its C-terminus.

Molecular Weight: 45.4 kDa

Gene ID: 9476

Pathways: [Tube Formation](#), [Asymmetric Protein Localization](#), [Embryonic Body Morphogenesis](#)

Application Details

Application Notes: Optimal working dilution should be determined by the investigator.

Restrictions: For Research Use only

Handling

Format: Liquid

Concentration: 1.0 mg/mL

Buffer: PBS with 0.05 % sodium azide and 0.5 % protein stabilizer.

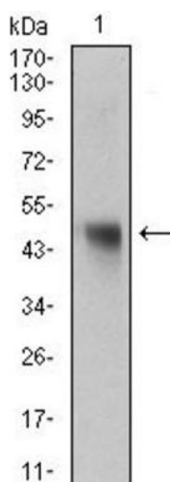
Preservative: Sodium azide

Precaution of Use: This product contains Sodium azide: a POISONOUS AND HAZARDOUS SUBSTANCE which should be handled by trained staff only.

Storage: -20 °C

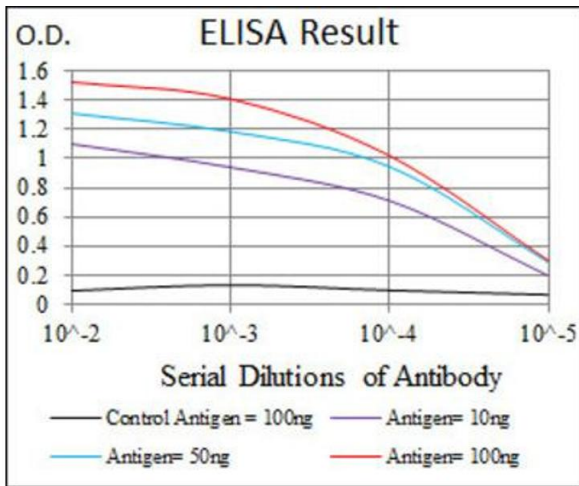
Storage Comment: Aliquot and store at -20 °C. Avoid repeated freeze/thaw cycles.

Images



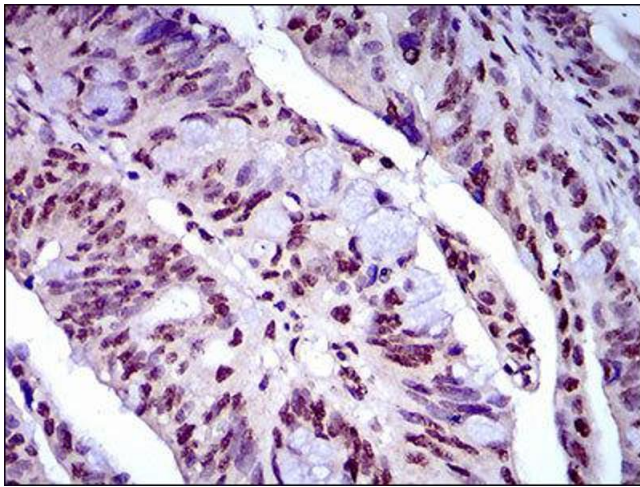
Western Blotting

Image 1. Western blot analysis using NAPSA antibody against rat liver tissue lysate.



ELISA

Image 2. Red: Control Antigen (100ng) ; Purple: Antigen (10ng) ; Green: Antigen (50ng) ; Blue: Antigen (100ng).



Immunohistochemistry

Image 3.

Please check the [product details page](#) for more images. Overall 7 images are available for ABIN1845258.