



[Go to Product page](#)

Datasheet for ABIN1845343
anti-CD25 antibody (AA 34-139)

9 Images

Overview

Quantity:	100 µL
Target:	CD25 (IL2RA)
Binding Specificity:	AA 34-139
Reactivity:	Human, Mouse, Rat, Monkey
Host:	Mouse
Clonality:	Monoclonal
Application:	Western Blotting (WB), Immunohistochemistry (IHC), ELISA, Immunofluorescence (fixed cells) (IF/ICC)

Product Details

Immunogen:	Purified recombinant fragment of human IL2RA (AA: 34-139) expressed in E. coli.
Isotype:	IgG1
Purification:	Purified antibody

Target Details

Target:	CD25 (IL2RA)
Alternative Name:	IL2RA (IL2RA Products)
Background:	The interleukin 2 (IL2) receptor alpha (IL2RA) and beta (IL2RB) chains, together with the common gamma chain (IL2RG), constitute the high-affinity IL2 receptor. Homodimeric alpha chains (IL2RA) result in low-affinity receptor, while homodimeric beta (IL2RB) chains produce a medium-affinity receptor. Normally an integral-membrane protein, soluble IL2RA has been

Target Details

isolated and determined to result from extracellular proteolysis. Alternately-spliced IL2RA mRNAs have been isolated, but the significance of each is presently unknown. Mutations in this gene are associated with interleukin 2 receptor alpha deficiency., , , ,

Molecular Weight: 30.8 kDa

Gene ID: 3559, 16184, 574300

Pathways: [JAK-STAT Signaling](#), [Growth Factor Binding](#), [Activated T Cell Proliferation](#)

Application Details

Application Notes: Optimal working dilution should be determined by the investigator.

Restrictions: For Research Use only

Handling

Format: Liquid

Concentration: 1.0 mg/mL

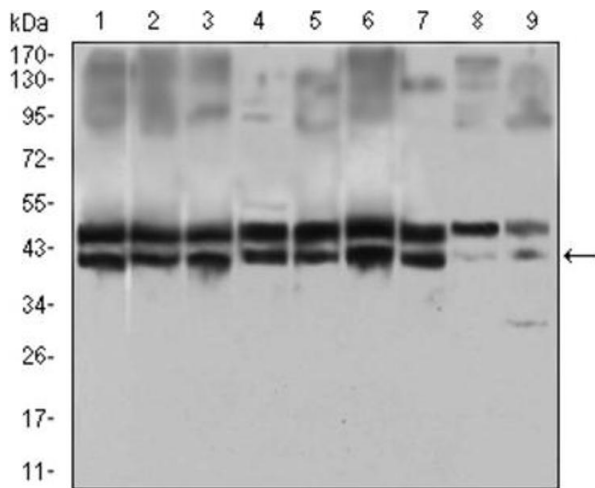
Buffer: PBS with 0.05 % sodium azide and 0.5 % protein stabilizer.

Preservative: Sodium azide

Precaution of Use: This product contains Sodium azide: a POISONOUS AND HAZARDOUS SUBSTANCE which should be handled by trained staff only.

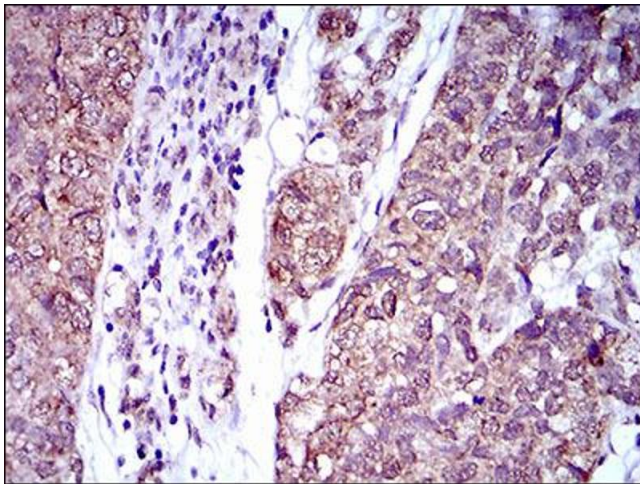
Storage: -20 °C

Storage Comment: Aliquot and store at -20 °C. Avoid repeated freeze/thaw cycles.



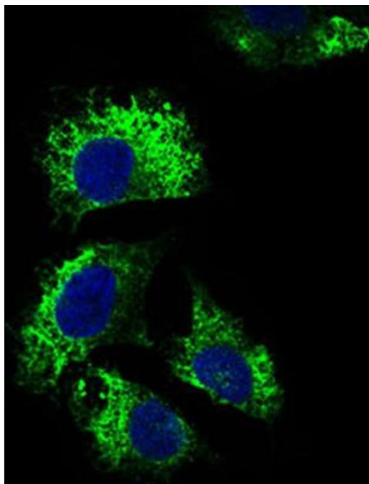
Immunofluorescence

Image 1. Immunofluorescence analysis of HeLa cells using IL2RA antibody (green). Blue: DRAQ5 fluorescent DNA dye.



Western Blotting

Image 2. Western blot analysis using IL2RA antibody against HeLa (1), MOLT4 (2), HEK293 (3), A549 (4), Jurkat (5), K562 (6), Cos7 (7), PC-12 (8) and NIH/3T3 (9) cell lysate.



Immunohistochemistry

Image 3. Immunohistochemical analysis of paraffin-embedded bladder cancer tissues using IL2RA antibody with DAB staining.

Please check the [product details page](#) for more images. Overall 9 images are available for ABIN1845343.