

Datasheet for ABIN1845370

**anti-Purinergic Receptor P2Y, G-Protein Coupled, 13 (P2RY13)
(AA 1-49) antibody**[Go to Product page](#)

4 Images

Overview

Quantity:	100 µL
Target:	Purinergic Receptor P2Y, G-Protein Coupled, 13 (P2RY13)
Binding Specificity:	AA 1-49
Reactivity:	Human
Host:	Mouse
Clonality:	Monoclonal
Conjugate:	Un-conjugated
Application:	Western Blotting (WB), ELISA, Flow Cytometry (FACS)

Product Details

Immunogen:	Purified recombinant fragment of human P2RY13 (AA: 1-49) expressed in E. coli.
Isotype:	IgG1
Purification:	Purified antibody

Target Details

Target:	Purinergic Receptor P2Y, G-Protein Coupled, 13 (P2RY13)
Alternative Name:	P2RY13 (P2RY13 Products)
Background:	The product of this gene belongs to the family of G-protein coupled receptors. This family has several receptor subtypes with different pharmacological selectivity, which overlaps in some cases, for various adenosine and uridine nucleotides. This receptor is activated by ADP.

Target Details

Molecular Weight:	40.8 kDa
Gene ID:	53829
UniProt:	Q9BPV8
Pathways:	cAMP Metabolic Process

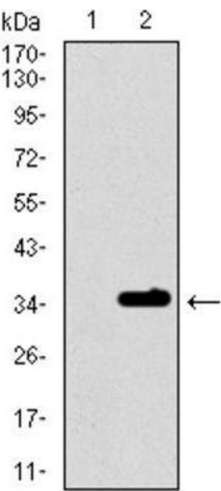
Application Details

Application Notes:	Optimal working dilution should be determined by the investigator.
Restrictions:	For Research Use only

Handling

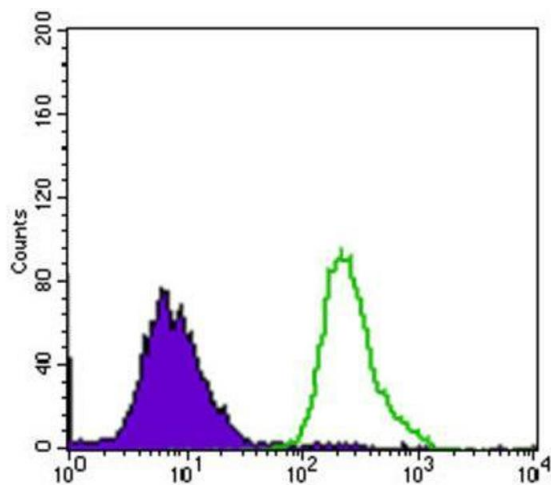
Format:	Liquid
Concentration:	1.0 mg/mL
Buffer:	PBS with 0.05 % sodium azide and 0.5 % protein stabilizer.
Preservative:	Sodium azide
Precaution of Use:	This product contains Sodium azide: a POISONOUS AND HAZARDOUS SUBSTANCE which should be handled by trained staff only.
Storage:	-20 °C
Storage Comment:	Aliquot and store at -20 °C. Avoid repeated freeze/thaw cycles.

Images



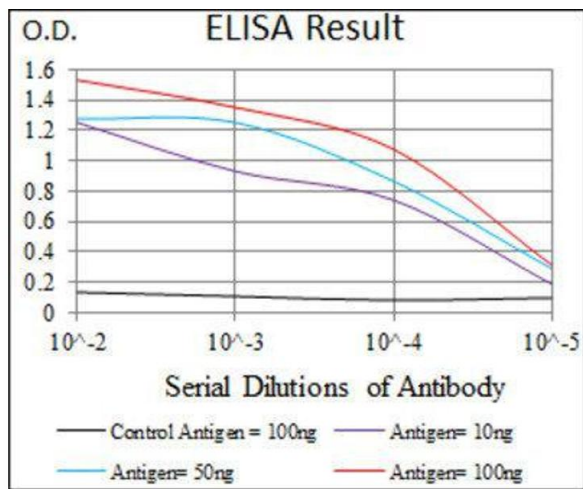
Western Blotting

Image 1.



Flow Cytometry

Image 2.



ELISA

Image 3.

Please check the [product details page](#) for more images. Overall 4 images are available for ABIN1845370.