

Datasheet for ABIN1845379
anti-CAMK4 antibody (AA 35-292)[Go to Product page](#)

11 Images

Overview

Quantity:	100 µL
Target:	CAMK4
Binding Specificity:	AA 35-292
Reactivity:	Human
Host:	Mouse
Clonality:	Monoclonal
Conjugate:	This CAMK4 antibody is un-conjugated
Application:	Western Blotting (WB), ELISA, Immunohistochemistry (IHC), Immunofluorescence (fixed cells) (IF/ICC), Flow Cytometry (FACS)

Product Details

Immunogen:	Purified recombinant fragment of human CAMK4 (AA: 35-292) expressed in E. Coli.
Isotype:	IgG1
Purification:	Purified antibody

Target Details

Target:	CAMK4
Alternative Name:	CAMK4 (CAMK4 Products)
Background:	The product of this gene belongs to the serine/threonine protein kinase family, and to the Ca (2+)/calmodulin-dependent protein kinase subfamily. This enzyme is a multifunctional serine/threonine protein kinase with limited tissue distribution, that has been implicated in

Target Details

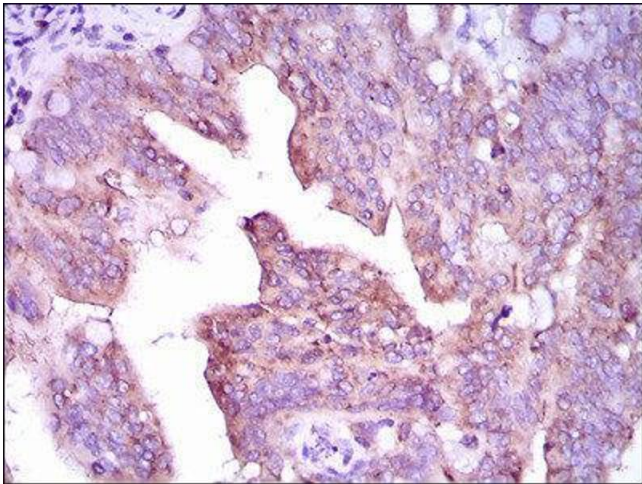
	transcriptional regulation in lymphocytes, neurons and male germ cells.
Molecular Weight:	58 kDa
Gene ID:	814
UniProt:	Q16566
Pathways:	EGFR Signaling Pathway , Neurotrophin Signaling Pathway , Production of Molecular Mediator of Immune Response , G-protein mediated Events , Interaction of EGFR with phospholipase C-gamma

Application Details

Application Notes:	Optimal working dilution should be determined by the investigator.
Restrictions:	For Research Use only

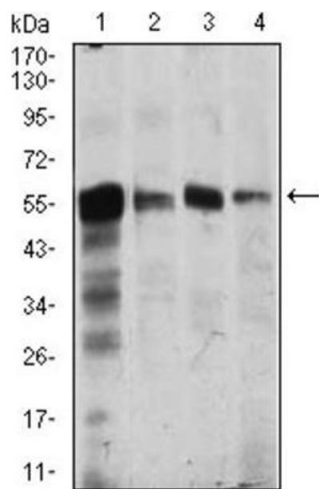
Handling

Format:	Liquid
Concentration:	1.0 mg/mL
Buffer:	PBS with 0.05 % sodium azide and 0.5 % protein stabilizer.
Preservative:	Sodium azide
Precaution of Use:	This product contains Sodium azide: a POISONOUS AND HAZARDOUS SUBSTANCE which should be handled by trained staff only.
Storage:	-20 °C
Storage Comment:	Aliquot and store at -20 °C. Avoid repeated freeze/thaw cycles.



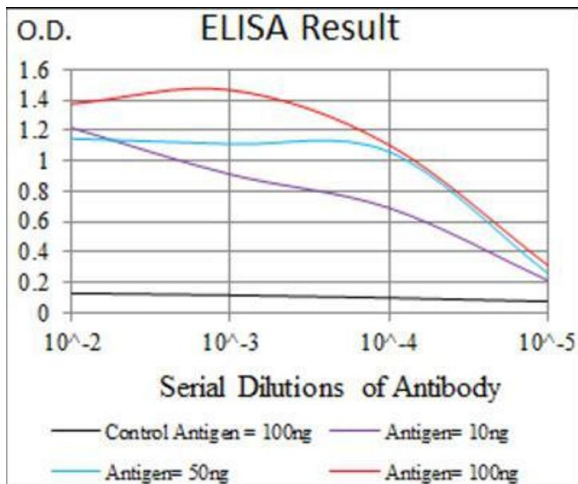
Immunohistochemistry

Image 1.



Immunofluorescence

Image 2. Immunofluorescence analysis of HepG2 cells using CAMK4 antibody (green). Blue: DRAQ5 fluorescent DNA dye. Red: Actin filaments have been labeled with Alexa Fluor-555 phalloidin.



ELISA

Image 3. Red: Control Antigen (100ng) ; Purple: Antigen (10ng) ; Green: Antigen (50ng) ; Blue: Antigen (100ng).

Please check the [product details page](#) for more images. Overall 11 images are available for ABIN1845379.