

Datasheet for ABIN1845413  
**anti-PDE1B antibody (AA 370-536)**



[Go to Product page](#)

5 Images

## Overview

Quantity:	100 µL
Target:	PDE1B
Binding Specificity:	AA 370-536
Reactivity:	Human, Mouse, Monkey
Host:	Mouse
Clonality:	Monoclonal
Conjugate:	This PDE1B antibody is un-conjugated
Application:	Western Blotting (WB), ELISA, Flow Cytometry (FACS)

## Product Details

Immunogen:	Purified recombinant fragment of human PDE1B (AA: 370-536) expressed in E. coli.
Isotype:	IgG1
Purification:	Purified antibody

## Target Details

Target:	PDE1B
Alternative Name:	PDE1B ( <a href="#">PDE1B Products</a> )
Background:	The protein encoded by this gene belongs to the cyclic nucleotide phosphodiesterase (PDE) family, and PDE1 subfamily. Members of the PDE1 family are calmodulin-dependent PDEs that are stimulated by a calcium-calmodulin complex. This PDE has dual-specificity for the second messengers, cAMP and cGMP, with a preference for cGMP as a substrate. cAMP and cGMP

## Target Details

---

function as key regulators of many important physiological processes. Alternatively spliced transcript variants encoding different isoforms have been described for this gene.

Molecular Weight: 61.4 kDa

Gene ID: 5153

Pathways: [Neurotrophin Signaling Pathway](#), [cAMP Metabolic Process](#), [G-protein mediated Events](#), [Interaction of EGFR with phospholipase C-gamma](#)

## Application Details

---

Application Notes: Optimal working dilution should be determined by the investigator.

Restrictions: For Research Use only

## Handling

---

Format: Liquid

Concentration: 1.0 mg/mL

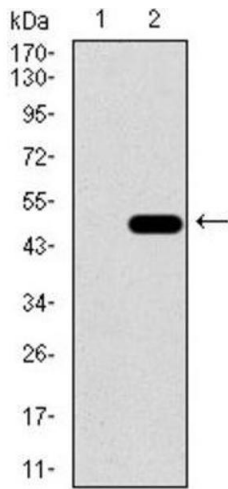
Buffer: PBS with 0.05 % sodium azide and 0.5 % protein stabilizer.

Preservative: Sodium azide

Precaution of Use: This product contains Sodium azide: a POISONOUS AND HAZARDOUS SUBSTANCE which should be handled by trained staff only.

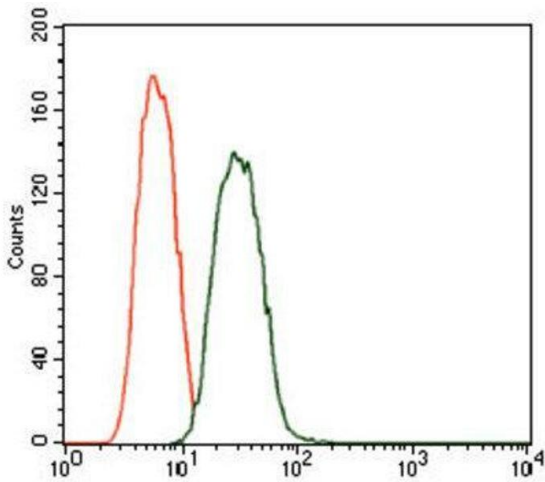
Storage: -20 °C

Storage Comment: Aliquot and store at -20 °C. Avoid repeated freeze/thaw cycles.



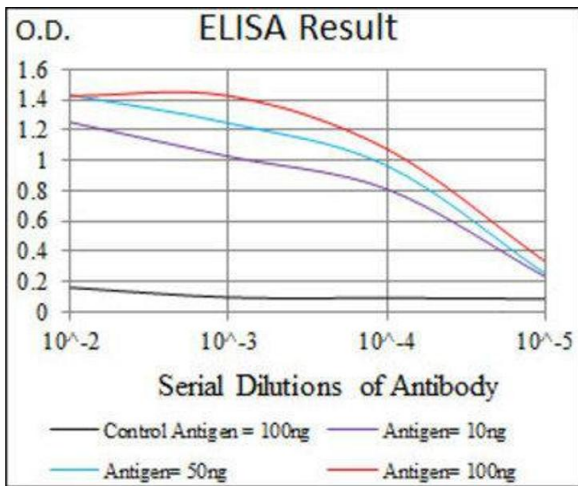
### Western Blotting

Image 1.



### Flow Cytometry

Image 2.



### ELISA

Image 3.

Please check the [product details page](#) for more images. Overall 5 images are available for ABIN1845413.