

Datasheet for ABIN184559
anti-SEC61A1 antibody (C-Term)

3 Images

[Go to Product page](#)

Overview

Quantity:	100 µg
Target:	SEC61A1
Binding Specificity:	C-Term
Reactivity:	Human
Host:	Goat
Clonality:	Polyclonal
Conjugate:	This SEC61A1 antibody is un-conjugated
Application:	Western Blotting (WB), ELISA

Product Details

Purpose:	SEC61A1
Immunogen:	Peptide with sequence C-KEQSEVGSMGALLF, from the C Terminus of the protein sequence according to NP_037468.1.
Sequence:	KEQSEVGSMG ALLF
Isotype:	IgG
Cross-Reactivity:	Cow, Dog, Human, Pig
Purification:	Purified from goat serum by ammonium sulphate precipitation followed by antigen affinity chromatography using the immunizing peptide.
Grade:	Verified

Target Details

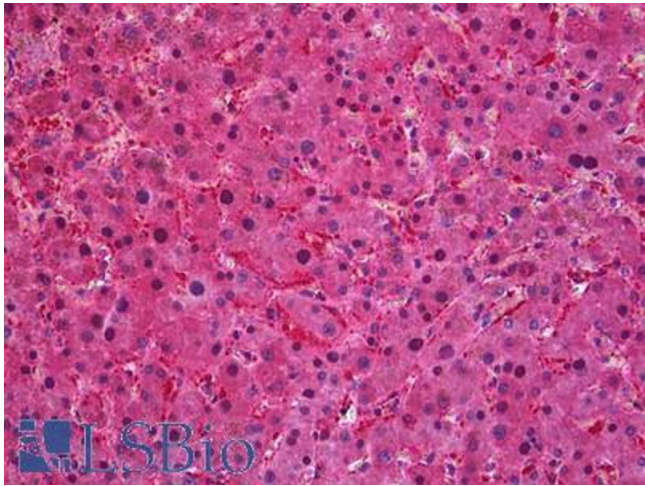
Target:	SEC61A1
Alternative Name:	SEC61A1 (SEC61A1 Products)
Background:	SEC61A1, HSEC61, SEC61, SEC61A, protein transport protein SEC61 alpha subunit isoform 1, sec61 homolog, Sec61 alpha 1 subunit (S. cerevisiae), Sec61 alpha 1 subunit, Sec61 alpha-1
Gene ID:	29927
NCBI Accession:	NP_037468

Application Details

Application Notes:	Western Blot: Approx 48 kDa band observed in Human Brain (Cerebellum) lysates (calculated MW of 52.3 kDa according to NP_037468.1). Recommended concentration: 0.3-1 µg/mL. Peptide ELISA: antibody detection limit dilution 1:16000.
Restrictions:	For Research Use only

Handling

Format:	Liquid
Concentration:	0.5 mg/mL
Buffer:	Supplied at 0.5 mg/mL in Tris saline, 0.02 % sodium azide, pH 7.3 with 0.5 % bovine serum albumin.
Preservative:	Sodium azide
Precaution of Use:	This product contains Sodium azide: a POISONOUS AND HAZARDOUS SUBSTANCE which should be handled by trained staff only.
Handling Advice:	Minimize freezing and thawing.
Storage:	-20 °C
Storage Comment:	Aliquot and store at -20°C, with minimal freeze/thawing. A working aliquot may be refrigerated at 4°C for a few weeks and still remain viable.



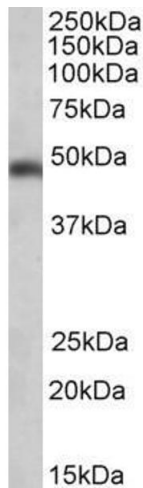
Immunohistochemistry

Image 1. ABIN184559 (3.75µg/ml) staining of paraffin embedded Human Liver. Steamed antigen retrieval with citrate buffer pH 6, AP-staining. This data is from a previous batch, not on sale.



Western Blotting

Image 2. ABIN184559 staining (3µg/ml) of Daudi lysate (RIPA buffer, 35µg total protein per lane). Primary incubated for 1 hour. Detected by western blot using chemiluminescence.



Western Blotting

Image 3. ABIN184559 (0.3µg/ml) staining of Human Brain (Cerebellum) lysate (35µg protein in RIPA buffer). Primary incubation was 1 hour. Detected by chemiluminescence.