

Datasheet for ABIN184562
anti-BCL7A antibody (C-Term)[Go to Product page](#)

4 Images

Overview

Quantity:	100 µg
Target:	BCL7A
Binding Specificity:	C-Term
Reactivity:	Human
Host:	Goat
Clonality:	Polyclonal
Conjugate:	This BCL7A antibody is un-conjugated
Application:	Western Blotting (WB), ELISA, Immunofluorescence (IF), Flow Cytometry (FACS)

Product Details

Purpose:	BCL7A
Immunogen:	Peptide with sequence C-MKLEASQQNSEEM, from the C Terminus of the protein sequence according to NP_066273.1, NP_001019979.1.
Sequence:	MKLEASQQNS EEM
Isotype:	IgG
Specificity:	This antibody is expected to recognize both reported isoforms (NP_066273.1, NP_001019979.1).
Cross-Reactivity:	Cow, Dog, Human, Mouse, Pig, Rat
Purification:	Purified from goat serum by ammonium sulphate precipitation followed by antigen affinity chromatography using the immunizing peptide.

Product Details

Grade: Verified

Target Details

Target: BCL7A

Alternative Name: BCL7A ([BCL7A Products](#))

Background: BCL7A, BCL7, B-cell CLL/lymphoma 7A, B-cell CLL/lymphoma-7

Gene ID: 605, 77045

NCBI Accession: [NP_066273](#), [NP_001019979](#)

Application Details

Application Notes: Western Blot: Approx 26 kDa band observed in Human Lymph Node lysates (calculated MW of 25.0 kDa according to NP_066273.1). Recommended concentration: 1-3 µg/mL. Primary incubation 1 hour at room temperature.
Peptide ELISA: antibody detection limit dilution 1:4000.

Comment: **Immunofluorescence:** Strong expression of the protein seen in the nuclei of U2OS cells.
Recommended concentration: 10µg/ml.
Flow Cytometry: Flow cytometric analysis of Daudi cells. Recommended concentration: 10ug/ml.

Restrictions: For Research Use only

Handling

Format: Liquid

Concentration: 0.5 mg/mL

Buffer: Supplied at 0.5 mg/mL in Tris saline, 0.02 % sodium azide, pH 7.3 with 0.5 % bovine serum albumin.

Preservative: Sodium azide

Precaution of Use: This product contains Sodium azide: a POISONOUS AND HAZARDOUS SUBSTANCE which should be handled by trained staff only.

Handling Advice: Minimize freezing and thawing.

Storage: -20 °C

Handling

Storage Comment: Aliquot and store at -20°C, with minimal freeze/thawing. A working aliquot may be refrigerated at 4°C for a few weeks and still remain viable.

Images

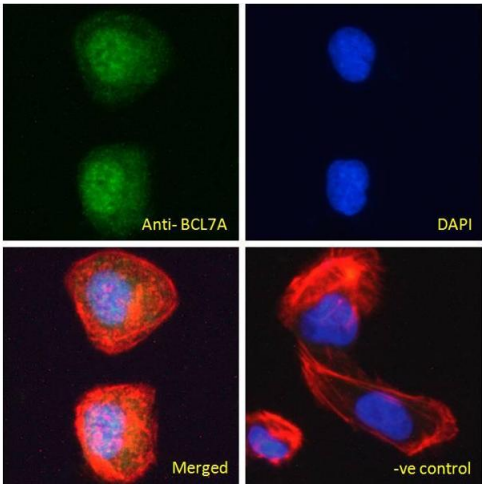


Western Blotting

Image 1. ABIN184562 staining (0.5µg/ml) of HeLa lysate (RIPA buffer, 35µg total protein per lane). Primary incubated for 1 hour. Detected by western blot using chemiluminescence.

Western Blotting

Image 2. ABIN184562 staining (1µg/ml) of Human Lymph Node lysate (35µg protein in RIPA buffer). Detected by chemiluminescence.



Immunofluorescence

Image 3. ABIN184562 Immunofluorescence analysis of paraformaldehyde fixed U2OS cells, permeabilized with 0.15% Triton. Primary incubation 1hr (10ug/ml) followed by Alexa Fluor 488 secondary antibody (2ug/ml), showing nuclear staining. Actin filaments were stained with phalloidin (red) and the nuclear stain is DAPI (blue). Negative control: Unimmunized goat IgG (10ug/ml) followed by Alexa Fluor 488 secondary antibody (2ug/ml).

Please check the [product details page](#) for more images. Overall 4 images are available for ABIN184562.