

Datasheet for ABIN184568  
**anti-RAB2A antibody (C-Term)**[Go to Product page](#)

## 1 Image

## Overview

Quantity:	100 µg
Target:	RAB2A
Binding Specificity:	C-Term
Reactivity:	Human
Host:	Goat
Clonality:	Polyclonal
Conjugate:	This RAB2A antibody is un-conjugated
Application:	Western Blotting (WB)

## Product Details

Purpose:	RAB2 / RAB2A
Immunogen:	Peptide with sequence HAGNQGGQQAGGGCC, from the C Terminus of the protein sequence according to NP_002856.1.
Sequence:	HAGNQGGQQA GGGCC
Isotype:	IgG
Predicted Reactivity:	Human, Mouse, Rat, Pig, Cow
Purification:	Purified from goat serum by ammonium sulphate precipitation followed by antigen affinity chromatography using the immunizing peptide.
Grade:	Verified

## Target Details

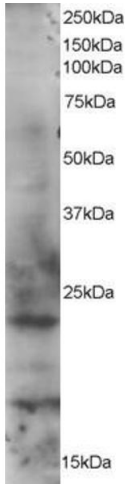
Target:	RAB2A
Alternative Name:	RAB2A ( <a href="#">RAB2A Products</a> )
Background:	RAB2, RAB2A, member RAS oncogene family , RAB2, member RAS oncogene family, GTP binding protein RAB2A
Gene ID:	5862
NCBI Accession:	<a href="#">NP_002856</a>
Pathways:	<a href="#">SARS-CoV-2 Protein Interactome</a>

## Application Details

Application Notes:	DS WB Results: Approx 23 kDa and 18 kDa bands seen in HeLa cell lysates. Recommended for use at 1-3 µg/mL.
Restrictions:	For Research Use only

## Handling

Format:	Liquid
Concentration:	0.5 mg/mL
Buffer:	Supplied at 0.5 mg/mL in Tris saline, 0.02 % sodium azide, pH 7.3 with 0.5 % bovine serum albumin.
Preservative:	Sodium azide
Precaution of Use:	This product contains Sodium azide: a POISONOUS AND HAZARDOUS SUBSTANCE which should be handled by trained staff only.
Handling Advice:	Minimize freezing and thawing.
Storage:	-20 °C
Storage Comment:	Aliquot and store at -20°C, with minimal freeze/thawing. A working aliquot may be refrigerated at 4°C for a few weeks and still remain viable.



Western Blotting

**Image 1.** ABIN184568 staining (1µg/ml) of HeLa lysate (RIPA buffer, 35µg total protein per lane). Primary incubated for 1 hour. Detected by western blot using chemiluminescence.