

Datasheet for ABIN1845714
anti-LPA antibody (AA 4330-4521)

8 Images

[Go to Product page](#)

Overview

Quantity:	100 µL
Target:	LPA (APOA)
Binding Specificity:	AA 4330-4521
Reactivity:	Human
Host:	Mouse
Clonality:	Monoclonal
Conjugate:	This LPA antibody is un-conjugated
Application:	Western Blotting (WB), ELISA, Immunohistochemistry (IHC), Immunofluorescence (fixed cells) (IF/ICC)

Product Details

Immunogen:	Purified recombinant fragment of human LPA (AA: 4330-4521) expressed in E. coli.
Isotype:	IgG1
Purification:	Purified antibody

Target Details

Target:	LPA (APOA)
Alternative Name:	LPA (APOA Products)
Background:	The protein encoded by this gene is a serine proteinase that inhibits the activity of tissue-type plasminogen activator I. The encoded protein constitutes a substantial portion of lipoprotein (a) and is proteolytically cleaved, resulting in fragments that attach to atherosclerotic lesions and

Target Details

promote thrombogenesis. Elevated plasma levels of this protein are linked to atherosclerosis. Depending on the individual, the encoded protein contains 2-43 copies of kringle-type domains. The allele represented here contains 15 copies of the kringle-type repeats and corresponds to that found in the reference genome sequence.

Molecular Weight: 501 kDa

Gene ID: 4018

UniProt: [P08519](#)

Application Details

Application Notes: Optimal working dilution should be determined by the investigator.

Restrictions: For Research Use only

Handling

Format: Liquid

Concentration: 1.0 mg/mL

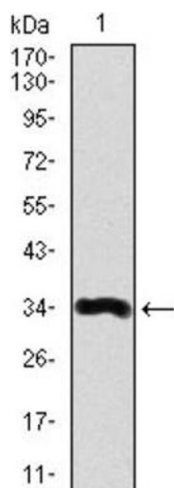
Buffer: PBS with 0.05 % sodium azide and 0.5 % protein stabilizer.

Preservative: Sodium azide

Precaution of Use: This product contains Sodium azide: a POISONOUS AND HAZARDOUS SUBSTANCE which should be handled by trained staff only.

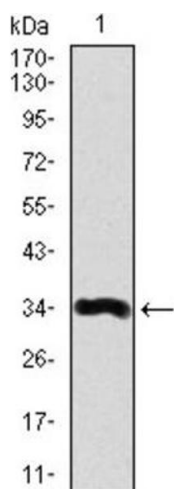
Storage: -20 °C

Storage Comment: Aliquot and store at -20 °C. Avoid repeated freeze/thaw cycles.



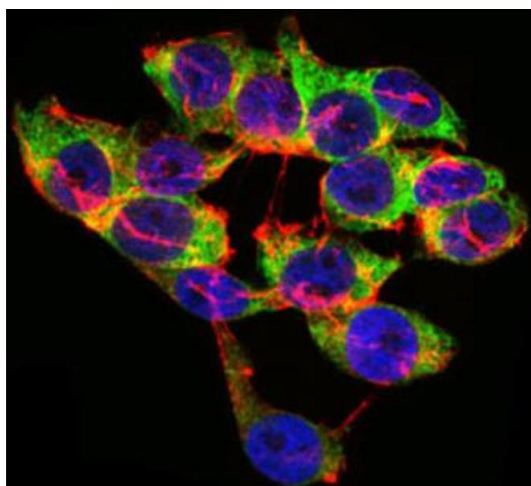
Western Blotting

Image 1.



Western Blotting

Image 2. Western blot analysis using LPA antibody against human LPA recombinant protein. (Expected MW is 34.1 kDa).



Immunofluorescence

Image 3. Immunofluorescence analysis of HepG2 cells using LPA antibody (green). Blue: DRAQ5 fluorescent DNA dye. Red: Actin filaments have been labeled with Alexa Fluor-555 phalloidin.

Please check the [product details page](#) for more images. Overall 8 images are available for ABIN1845714.